

TOURIST ACCOMMODATION

VICTORIA

EMBARGOED UNTIL 11:30AM WED 26 JUNE 1996

MARCH QTR KEY FIGURES

	Mar 95	Mar 96	change
Hotels, Motels and Guest Houses			
Rooms available (No.)	29 973	29 891	-0.3 %
Room occupancy rate (%)	55.9	57.7	1.8 pts
Takings from accommodation (\$'000)	131 900	150 879	14.4 %
Holiday Flats, Units and Houses			
Units, etc. available (No.)	3 744	3 969	6.0 %
Unit occupancy rate (%)	51.4	52.6	1.2 pts
Takings from accommodation (\$'000)	13 733	15 765	14.8 %
Caravan Parks			
Sites, cabins, etc. available (No.)	67 118	67 578	0.7 %
Site occupancy rate (%)	46.7	47.2	0.5 pts
Takings from accommodation (\$'000)	24 069	25 860	7.4 %
Visitor Hostels			
Bed spaces available (No.)	3 043	3 358	10.4 %
Bed occupancy rate (%)	47.3	45.1	-2.2 pts
Takings from accommodation (\$'000)	1 691	2 004	18.5 %

MARCH QTR KEY POINTS

SUPPLY UP EXCEPT FOR HOTELS AND MOTELS

- All accommodation types except for hotels, motels and guest houses recorded increases in capacity available in March quarter 1996 compared with March quarter 1995. For visitor hostels and for holiday flats, units and houses, the rises were quite substantial at 10.4% and 6.0% respectively, compared with a 0.7% rise for caravan parks and a marginal decrease for hotels, motels and guest houses.

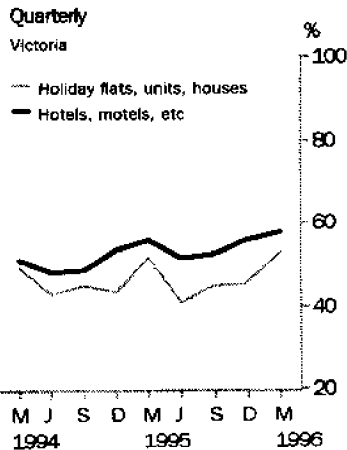
OCCUPANCY RATES UP EXCEPT FOR HOSTELS

- The room occupancy rate of 57.7% for hotels, motels and guest houses was the highest March quarter result achieved since 1988 and, similarly, the 52.6% occupancy rate for holiday flats, units and houses was the highest achieved since 1989. For caravan parks, the site occupancy rate rose by 0.5 percentage points.
- For visitor hostels, demand increased by a lower proportion than the rise in number of bedspaces available, resulting in a fall in the bed occupancy rate.

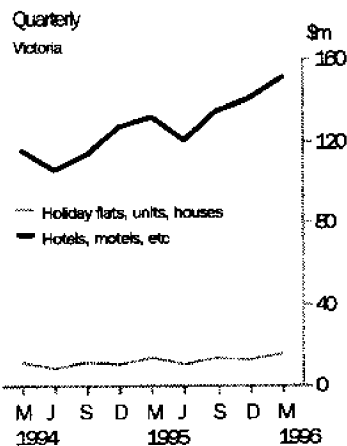
INCREASES IN TARIFFS

- Average takings for hotels, motels and guest houses per room night occupied rose from \$88 to \$96 in March quarter 1996 compared with March quarter 1995 and for holiday flats, units and houses from \$79 to \$83 per unit night occupied. For visitor hostels, average takings per guest night increased from \$13 to \$15. Average takings per site night occupied in caravan parks remained at \$9.

Occupancy rates



Accommodation takings



INQUIRIES

- For further information about these and related statistics, contact Jennifer Cox on 07 3222 6148, or any ABS Office.

NOTES

FORTHCOMING ISSUES

ISSUE (Quarter)

EXPECTED RELEASE DATE

June 1996

26 September 1996

CHANGES IN THIS ISSUE

As from 1 July 1995, extensive changes have been made to Local Government Areas (LGAs) in Victoria. Victoria now has 78 LGAs compared with the 210 which existed prior to the introduction of the changes. The extent of the changes has meant that most LGAs have names unrelated to the previously existing LGAs. For more details, refer to the Information Paper *Victorian Local Government Amalgamations 1994-95: Changes to the Australian Standard Geographic Classification* (1257.0). Further information is available in the *Australian Standard Geographic Classification, Edition 2.5* (1216.0). Maps and an explanatory key showing the new Statistical Divisions (SDs) and Statistical Local Areas (SLAs), are printed on pages 31 - 35.

Quarterly data rather than monthly data are now plotted in the diagrams on the front cover page.

STUART JACKSON
Deputy Commonwealth Statistician

TABLE 1 — SUMMARY OF HOTELS, MOTELS AND GUEST HOUSES WITH FACILITIES, VICTORIA

Particulars	Unit	Quarter ended				Year ended			
		December 1994	March 1995	June 1995	September 1995	December 1995	March 1996	March 1995	March 1996
LICENSED HOTELS WITH FACILITIES									
Establishments	No.	189	187	194	192	195	196
Guest rooms	No.	10,089	10,121	9,836	9,853	10,058	10,103
Bed spaces	No.	24,598	24,557	24,192	23,924	24,474	24,769
Employment (persons)	No.	9,592	9,795	9,429	9,719	9,938	9,835
Room nights occupied	'000	605.0	599.5	543.0	578.3	615.0	623.2	2,234.3	2,359.4
Room occupancy rate	per cent	65.4	65.9	60.7	63.8	67.1	67.8	60.8	64.9
Guest nights	'000	938.0	945.5	821.1	874.9	955.8	965.5	3,466.4	3,617.2
Bed occupancy rate	per cent	41.6	42.8	37.3	39.7	42.8	42.9	38.7	40.7
Guest arrivals	'000	424.5	435.6	389.2	431.7	433.5	465.0	1,603.2	1,719.5
Average length of stay	days	2.2	2.2	2.1	2.0	2.2	2.1	2.2	2.1
Takings from accommodation	\$'000	68,649	68,928	62,713	72,441	75,621	82,626	248,248	293,402
MOTELS AND GUEST HOUSES WITH FACILITIES									
Establishments	No.	817	816	822	817	820	823
Guest rooms	No.	19,803	19,852	19,707	19,651	19,740	19,788
Bed spaces	No.	57,844	58,023	57,919	57,690	58,052	58,170
Employment (persons)	No.	6,460	6,619	6,522	6,775	6,663	6,751
Room nights occupied	'000	855.9	907.4	829.1	843.3	904.2	945.0	3,359.0	3,521.6
Room occupancy rate	per cent	47.0	50.8	46.3	46.7	49.8	52.5	46.5	48.8
Guest nights	'000	1,475.0	1,603.7	1,403.4	1,467.4	1,578.1	1,704.8	5,854.7	6,153.7
Bed occupancy rate	per cent	27.7	30.7	26.7	27.7	29.6	32.2	27.7	29.0
Guest arrivals	'000	875.8	914.4	811.7	835.2	908.0	955.0	3,399.0	3,509.9
Average length of stay	days	1.7	1.8	1.7	1.8	1.7	1.8	1.7	1.8
Takings from accommodation	\$'000	58,423	62,972	57,923	62,845	64,711	68,253	230,238	253,732
TOTAL HOTELS, MOTELS AND GUEST HOUSES WITH FACILITIES									
Establishments	No.	1,006	1,003	1,016	1,009	1,015	1,019
Guest rooms	No.	29,892	29,973	29,543	29,504	29,798	29,891
Bed spaces	No.	82,442	82,580	82,111	81,614	82,526	82,939
Employment (persons)	No.	16,052	16,414	15,951	16,494	16,601	16,586
Room nights occupied	'000	1,460.9	1,506.9	1,372.1	1,421.6	1,519.1	1,568.2	5,593.3	5,881.0
Room occupancy rate	per cent	53.2	55.9	51.1	52.4	55.6	57.7	51.3	54.2
Guest nights	'000	2,413.0	2,549.1	2,224.5	2,342.2	2,533.8	2,670.3	9,321.1	9,770.9
Bed occupancy rate	per cent	31.9	34.3	29.8	31.2	33.5	35.4	31.0	32.5
Guest arrivals	'000	1,300.3	1,350.0	1,200.9	1,267.0	1,341.6	1,420.0	5,002.2	5,229.4
Average length of stay	days	1.9	1.9	1.9	1.8	1.9	1.9	1.9	1.9
Takings from accommodation	\$'000	127,072	131,900	120,636	135,286	140,332	150,879	478,486	547,133

TABLE 2 — SUMMARY OF CARAVAN PARKS, VICTORIA

Particulars	Unit	Quarter ended				Year ended			
		December 1994	March 1995	June 1995	September 1995	December 1995	March 1996	March 1995	March 1996
SHORT-TERM CARAVAN PARKS									
Establishments	No.	436	435	434	438	438	438
Capacity									
On-site vans	No.	2,075	2,018	1,991	2,051	2,065	2,067
Other powered sites	No.	36,263	36,393	36,364	36,594	36,701	36,760
Unpowered sites	No.	12,680	12,580	12,537	12,825	12,859	12,720
Cabins, etc.	No.	2,359	2,316	2,303	2,355	2,376	2,371
Total capacity	No.	53,377	53,307	53,195	53,825	54,001	53,918
Sites occupied by long-term guests	No.	1,716	1,717	1,737	1,711	1,731	1,729
Other sites permanently reserved	No.	14,850	15,389	14,840	14,941	15,283	16,005
Employment (persons)	No.	1,477	1,419	1,315	1,352	1,494	1,432
Site nights occupied	'000	1,946.8	2,245.2	1,864.9	1,745.5	1,979.0	2,300.9	7,755.6	7,890.2
Site occupancy rate	per cent	39.6	46.8	38.5	35.4	39.8	46.9	39.7	40.2
Takings from accommodation	\$'000	14,503	17,781	10,670	10,730	16,035	19,178	53,155	56,614
LONG-TERM CARAVAN PARKS									
Establishments	No.	164	164	164	162	162	161
Capacity									
On-site vans	No.	1,904	1,895	1,892	1,863	1,876	1,808
Other powered sites	No.	8,618	8,545	8,510	8,382	8,328	8,301
Unpowered sites	No.	2,172	2,170	2,160	2,170	2,182	2,138
Cabins, etc.	No.	1,142	1,201	1,220	1,282	1,323	1,413
Total capacity	No.	13,836	13,811	13,782	13,697	13,709	13,660
Sites occupied by long-term guests	No.	4,750	4,800	4,626	4,615	4,743	4,935
Other sites permanently reserved	No.	340	344	318	353	395	391
Employment (persons)	No.	512	504	497	501	494	509
Site nights occupied	'000	564.9	577.3	559.4	559.7	569.2	602.9	2,243.1	2,291.2
Site occupancy rate	per cent	44.4	46.4	44.6	44.4	45.2	48.5	44.6	45.7
Takings from accommodation	\$'000	6,006	6,288	5,887	5,769	6,169	6,682	23,643	24,507
TOTAL CARAVAN PARKS									
Establishments	No.	600	599	598	600	600	599
Capacity									
On-site vans	No.	3,979	3,913	3,883	3,914	3,941	3,875
Other powered sites	No.	44,881	44,938	44,874	44,976	45,029	45,061
Unpowered sites	No.	14,852	14,750	14,697	14,995	15,041	14,858
Cabins, etc.	No.	3,501	3,517	3,523	3,637	3,699	3,784
Total capacity	No.	67,213	67,118	66,977	67,522	67,710	67,578
Sites occupied by long-term guests	No.	6,466	6,517	6,343	6,326	6,474	6,664
Other sites permanently reserved	No.	15,190	15,733	15,158	15,294	15,678	16,396
Employment (persons)	No.	1,989	1,923	1,812	1,853	1,988	1,941
Site nights occupied	'000	2,511.7	2,822.5	2,424.3	2,305.3	2,548.1	2,903.7	9,998.7	10,181.4
Site occupancy rate	per cent	40.6	46.7	39.8	37.2	40.9	47.2	40.7	41.3
Takings from accommodation	\$'000	20,509	24,069	16,557	16,499	22,204	25,860	76,798	81,120

TABLE 3— SUMMARY OF HOLIDAY FLATS, UNITS AND HOUSES, VICTORIA

Particulars	Unit	Quarter ended						Year ended	
		December 1994	March 1995	June 1995	September 1995	December 1995	March 1996	March 1995	March 1996
Letting entities	No.	200	220	219	216	217	227
Flats, units and houses									
Single bedroom	No.	1,042	1,136	1,139	1,151	1,145	1,225
Multiple bedroom	No.	2,263	2,608	2,420	2,373	2,531	2,744
<i>Total flats, units and houses</i>	<i>No.</i>	<i>3,305</i>	<i>3,744</i>	<i>3,559</i>	<i>3,524</i>	<i>3,676</i>	<i>3,969</i>	<i>..</i>	<i>..</i>
Bed spaces	No.	14,573	16,825	15,914	15,425	16,156	17,863
Employment (persons) (a)	No.	730	779	790	827	802	820
Unit nights occupied	'000	131.5	173.1	132.1	143.6	153.2	189.5	549.0	618.5
Unit occupancy rate	per cent	43.2	51.4	40.9	44.5	45.3	52.6	45.6	46.0
Unit lettings	'000	31.6	36.7	32.0	33.4	38.1	36.8	128.2	140.3
Average length of stay	days	4.2	4.7	4.1	4.3	4.0	5.1	4.3	4.4
Takings from accommodation	\$'000	10,461	13,733	10,420	13,163	12,812	15,765	44,440	52,160

(a) Employment numbers exclude real estate agents and their employees.

TABLE 4— SUMMARY OF VISITOR HOSTELS, VICTORIA

Particulars	Unit	Quarter ended						Year ended	
		December 1994	March 1995	June 1995	September 1995	December 1995	March 1996	March 1995	March 1996
Establishments	No.	51	56	55	57	55	55
Bed spaces	No.	2,825	3,043	3,026	3,264	3,320	3,358
Employment (persons)	No.	160	170	170	183	198	196
Guest nights	'000	102.9	129.4	93.0	96.0	119.4	137.9	392.5	446.3
Bed occupancy rate	per cent	39.6	47.3	33.8	32.5	39.1	45.1	37.2	37.8
Guest arrivals	'000	43.3	53.0	39.4	41.1	49.9	49.3	163.1	179.6
Average length of stay	days	2.4	2.4	2.4	2.3	2.4	2.8	2.4	2.5
Takings from accommodation	\$'000	1,310	1,691	1,245	1,381	1,587	2,004	5,087	6,217

TABLE 5—HOTELS, MOTELS AND GUEST HOUSES WITH FACILITIES BY STAR GRADING,
MELBOURNE CITY, MELBOURNE STATISTICAL DIVISION AND VICTORIA

Particulars	Melbourne City				Melbourne Statistical Division					
	Star grading				Star grading					
	Ungraded, 1 and 2	3	4 and 5	Total	Ungraded and 1	2	3	4	5	Total
ESTABLISHMENTS, CAPACITY AND EMPLOYMENT										
<i>March quarter 1995—</i>										
Establishments	12	22	21	55	14	70	100	47	9	240
Guest rooms	1,214	2,087	5,249	8,550	414	2,145	4,511	5,127	2,708	14,905
Bed spaces	2,548	5,460	11,434	19,442	1,178	5,150	12,317	12,289	5,670	36,604
Employment (persons)	289	759	4,844	5,892	252	1,362	1,928	3,532	3,255	10,329
<i>March quarter 1996—</i>										
Establishments	11	22	20	53	17	59	110	48	9	243
Guest rooms	1,188	1,948	4,863	7,999	594	1,724	4,415	5,312	2,475	14,520
Bed spaces	2,521	5,193	10,721	18,435	1,559	4,214	12,107	13,190	5,249	36,319
Employment (persons)	334	774	4,405	5,513	330	1,211	2,126	3,463	3,023	10,153
ROOM NIGHTS OCCUPIED ('000)										
<i>March quarter 1995</i>	62.6	135.8	367.1	565.5	15.5	98.4	264.7	339.6	188.0	906.1
<i>1996—</i>										
January	22.3	43.4	110.1	175.8	6.8	30.6	84.5	108.0	57.7	287.7
February	21.5	46.0	124.0	191.4	7.8	27.6	88.6	129.2	62.1	315.3
March	24.8	49.9	131.7	206.4	9.5	31.2	97.6	135.3	65.8	339.4
<i>March quarter 1996</i>	68.7	139.3	365.8	573.7	24.2	89.5	270.7	372.5	185.6	942.5
ROOM OCCUPANCY RATES (per cent)										
<i>March quarter 1995</i>	57.3	72.3	77.7	73.5	41.5	51.0	65.2	73.7	77.1	67.6
<i>1996—</i>										
January	60.7	71.9	73.0	70.9	37.5	57.3	61.8	65.6	75.2	64.0
February	62.3	81.4	87.9	82.5	45.5	55.2	69.2	83.8	86.6	74.9
March	67.5	82.6	87.4	83.3	51.8	58.5	71.3	82.2	85.7	75.4
<i>March quarter 1996</i>	63.5	78.6	82.7	78.8	45.0	57.1	67.4	77.1	82.4	71.3
GUEST NIGHTS ('000)										
<i>March quarter 1995</i>	96.8	220.8	559.7	877.2	27.5	159.8	425.2	525.6	275.1	1,413.1
<i>1996—</i>										
January	38.8	83.3	175.8	297.9	12.6	55.0	155.9	182.1	83.8	489.4
February	33.6	76.3	180.0	290.0	13.3	44.9	144.5	190.2	85.8	478.7
March	38.7	84.3	191.8	314.8	14.5	51.7	161.8	198.2	91.4	517.5
<i>March quarter 1996</i>	111.2	243.9	547.7	902.8	40.4	151.6	462.2	570.5	261.0	1,485.6
BED OCCUPANCY RATES (per cent)										
<i>March quarter 1995</i>	42.2	44.9	54.4	50.1	25.9	34.5	38.4	47.6	53.9	42.9
<i>1996—</i>										
January	49.7	51.8	52.9	52.1	26.5	42.1	41.5	44.5	51.5	43.5
February	46.0	50.7	57.9	54.2	29.4	36.7	41.2	49.7	56.4	45.5
March	49.5	52.4	57.7	55.1	29.9	39.6	43.1	48.5	56.1	46.0
<i>March quarter 1996</i>	48.5	51.6	56.1	53.8	28.6	39.5	42.0	47.5	54.6	45.0
GUEST ARRIVALS ('000)										
<i>March quarter 1995</i>	41.2	97.0	242.8	380.9	16.5	72.7	200.6	252.3	110.1	652.1
<i>1996—</i>										
January	13.9	31.6	64.4	109.8	5.0	23.9	66.2	81.8	27.4	204.3
February	13.7	34.5	82.4	130.6	5.7	22.3	70.5	100.0	37.2	235.6
March	14.4	36.0	90.7	141.2	6.1	23.5	75.0	110.4	33.9	248.8
<i>March quarter 1996</i>	42.0	102.1	237.5	381.5	16.7	69.7	211.6	292.2	98.5	688.7
AVERAGE LENGTH OF STAY (days)										
<i>March quarter 1995</i>	2.4	2.3	2.3	2.3	1.7	2.2	2.1	2.1	2.5	2.2
<i>March quarter 1996</i>	2.6	2.4	2.3	2.4	2.4	2.2	2.2	2.0	2.7	2.2
TAKINGS FROM ACCOMMODATION (\$'000)										
<i>March quarter 1995</i>	3,481	10,607	49,953	64,042	1,051	5,363	20,393	38,934	28,505	94,245
<i>1996—</i>										
January	1,574	3,765	16,391	21,729	579	1,889	6,902	12,161	10,087	31,618
February	1,498	3,898	19,122	24,517	688	1,644	7,162	15,000	11,326	35,820
March	1,950	4,619	22,699	29,268	958	1,992	8,423	17,423	13,766	42,564
<i>March quarter 1996</i>	5,021	12,282	58,211	75,515	2,226	5,526	22,487	44,584	35,179	110,002

**TABLE 5—HOTELS, MOTELS AND GUEST HOUSES WITH FACILITIES BY STAR GRADING,
MELBOURNE CITY, MELBOURNE STATISTICAL DIVISION AND VICTORIA—continued**

Particulars	Victoria						Total
	Star grading						
	1	2	3	4	5	Ungraded	
ESTABLISHMENTS, CAPACITY AND EMPLOYMENT							
<i>March quarter 1995—</i>							
Establishments	18	377	480	73	9	46	1,003
Guest rooms	237	7,174	12,715	6,151	2,708	988	29,973
Bed spaces	626	20,391	37,654	15,435	5,670	2,804	82,580
Employment (persons)	224	3,290	4,788	4,257	3,255	600	16,414
<i>March quarter 1996</i>							
Establishments	16	309	539	92	9	54	1,019
Guest rooms	199	5,605	13,467	6,808	2,475	1,337	29,891
Bed spaces	486	15,952	39,815	17,653	5,249	3,784	82,939
Employment (persons)	192	2,922	5,183	4,475	3,023	791	16,586
ROOM NIGHTS OCCUPIED ('000)							
<i>March quarter 1995</i>	4.2	263.8	619.6	400.7	188.0	30.6	1,506.9
<i>1996—</i>							
January	1.1	79.7	219.1	134.3	57.7	14.3	506.2
February	0.9	65.1	199.9	153.8	62.1	13.9	495.7
March	1.3	79.3	238.5	164.1	65.8	17.3	566.3
<i>March quarter 1996</i>	3.4	224.1	657.5	452.2	185.6	45.5	1,568.2
ROOM OCCUPANCY RATES (per cent)							
<i>March quarter 1995</i>	19.9	40.9	54.2	72.5	77.1	34.4	55.9
<i>1996—</i>							
January	19.6	45.9	52.6	63.6	75.2	35.1	54.7
February	16.1	40.0	51.2	77.9	86.6	35.8	57.2
March	21.6	45.8	57.1	77.7	85.7	41.7	61.1
<i>March quarter 1996</i>	19.1	44.0	53.7	73.0	82.4	37.6	57.7
GUEST NIGHTS ('000)							
<i>March quarter 1995</i>	6.2	485.3	1,090.6	636.3	275.1	55.6	2,549.1
<i>1996—</i>							
January	1.8	159.4	438.0	238.4	83.8	28.6	950.1
February	1.4	113.9	340.9	230.2	85.8	24.3	796.6
March	2.4	142.3	413.3	245.7	91.4	28.5	923.6
<i>March quarter 1996</i>	5.7	415.7	1,192.2	714.3	261.0	81.4	2,670.3
BED OCCUPANCY RATES (per cent)							
<i>March quarter 1995</i>	11.1	26.4	32.2	45.9	53.9	22.0	34.3
<i>1996—</i>							
January	13.1	32.2	35.5	43.6	51.5	24.8	37.0
February	10.3	24.6	29.5	45.0	56.4	22.1	33.1
March	15.9	28.9	33.5	44.9	56.1	24.3	35.9
<i>March quarter 1996</i>	13.2	28.7	32.9	44.5	54.6	23.8	35.4
GUEST ARRIVALS ('000)							
<i>March quarter 1995</i>	4.2	269.2	621.3	317.7	110.1	27.6	1,350.0
<i>1996—</i>							
January	1.3	86.3	238.4	111.1	27.4	13.1	477.7
February	0.9	65.6	197.7	124.6	37.2	11.8	437.7
March	1.6	80.0	236.4	139.6	33.9	13.1	504.6
<i>March quarter 1996</i>	3.9	231.9	672.5	375.3	98.5	38.0	1,420.0
AVERAGE LENGTH OF STAY (days)							
<i>March quarter 1995</i>	1.5	1.8	1.8	2.0	2.5	2.0	1.9
<i>March quarter 1996</i>	1.5	1.8	1.8	1.9	2.7	2.1	1.9
TAKINGS FROM ACCOMMODATION (\$'000)							
<i>March quarter 1995</i>	129	13,739	43,263	44,203	28,505	2,061	131,900
<i>1996—</i>							
January	38	4,622	16,151	14,543	10,087	1,110	46,551
February	27	3,521	14,129	17,186	11,326	1,154	47,343
March	40	4,368	17,214	20,008	13,766	1,589	56,985
<i>March quarter 1996</i>	105	12,511	47,493	51,737	35,179	3,853	150,879

TABLE 6 — HOTELS, MOTELS AND GUEST HOUSES WITH FACILITIES BY STATISTICAL DIVISION (a),
VICTORIA

Particulars	Melbourne (SD)			Barwon (SD)			Western District (SD)		
	Licensed hotels	Motels etc.	Total	Licensed hotels	Motels etc.	Total	Licensed hotels	Motels etc.	Total
ESTABLISHMENTS, CAPACITY AND EMPLOYMENT									
<i>March quarter 1995—</i>									
Establishments	67	173	240	16	62	78	13	62	75
Guest rooms	7,814	7,091	14,905	378	1,265	1,643	239	1,060	1,299
Bed spaces	17,763	18,841	36,604	1,214	3,763	4,977	624	3,103	3,727
Employment (persons)	7,781	2,548	10,329	503	516	1,019	271	393	664
<i>March quarter 1996 -</i>									
Establishments	70	173	243	17	61	78	14	66	80
Guest rooms	7,660	6,860	14,520	389	1,267	1,656	254	1,145	1,399
Bed spaces	17,739	18,580	36,319	1,228	3,829	5,057	661	3,357	4,018
Employment (persons)	7,531	2,622	10,153	627	470	1,097	280	412	692
ROOM NIGHTS OCCUPIED ('000)									
<i>March quarter 1995</i>	520.4	385.7	906.1	19.2	68.5	87.7	8.7	58.2	66.9
<i>1996—</i>									
January	163.0	124.8	287.7	7.1	25.5	32.7	2.7	21.9	24.6
February	183.3	132.0	315.3	6.9	20.5	27.4	2.3	16.3	18.7
March	195.8	143.7	339.4	6.9	23.4	30.3	2.7	20.5	23.2
<i>March quarter 1996</i>	542.0	400.5	942.5	20.8	69.5	90.3	7.7	58.8	66.5
ROOM OCCUPANCY RATES (per cent)									
<i>March quarter 1995</i>	74.1	60.4	67.6	56.6	60.2	59.3	40.4	61.1	57.3
<i>1996—</i>									
January	68.6	58.8	64.0	60.8	65.0	64.1	33.9	61.8	56.7
February	82.5	66.4	74.9	60.7	55.8	57.0	31.8	49.2	46.1
March	82.4	67.6	75.4	56.9	59.6	59.0	34.6	57.7	53.5
<i>March quarter 1996</i>	77.8	64.2	71.3	59.4	60.3	60.1	33.5	56.4	52.2
GUEST NIGHTS ('000)									
<i>March quarter 1995</i>	802.2	610.9	1,413.1	41.9	132.1	174.0	14.2	112.6	126.9
<i>1996—</i>									
January	260.7	228.7	489.4	19.3	54.7	73.9	4.7	46.4	51.2
February	268.9	209.9	478.7	13.8	38.0	51.7	3.5	28.4	31.9
March	285.7	231.8	517.5	14.0	43.6	57.5	4.1	36.2	40.4
<i>March quarter 1996</i>	815.2	670.4	1,485.6	47.0	136.2	183.2	12.4	111.1	123.4
BED OCCUPANCY RATES (per cent)									
<i>March quarter 1995</i>	50.2	36.0	42.9	38.4	39.0	38.8	25.3	40.4	37.9
<i>1996—</i>									
January	47.4	39.7	43.5	52.5	46.0	47.6	23.0	44.6	41.1
February	52.3	39.0	45.5	38.6	34.2	35.3	18.3	29.1	27.4
March	51.9	40.3	46.0	36.7	36.7	36.7	20.2	34.8	32.4
<i>March quarter 1996</i>	50.5	39.7	45.0	42.6	39.1	39.9	20.5	36.4	33.8
GUEST ARRIVALS ('000)									
<i>March quarter 1995</i>	354.6	297.5	652.1	17.8	75.4	93.2	8.9	73.9	82.7
<i>1996—</i>									
January	107.1	97.1	204.3	6.8	30.7	37.6	3.5	31.8	35.3
February	133.4	102.2	235.6	6.2	23.8	29.9	2.5	21.4	23.9
March	140.7	108.1	248.8	6.2	27.1	33.3	2.9	25.8	28.7
<i>March quarter 1996</i>	381.3	307.4	688.7	19.2	81.6	100.8	8.9	79.0	87.9
AVERAGE LENGTH OF STAY (days)									
<i>March quarter 1995</i>	2.3	2.1	2.2	2.4	1.8	1.9	1.6	1.5	1.5
<i>March quarter 1996</i>	2.1	2.2	2.2	2.4	1.7	1.8	1.4	1.4	1.4
TAKINGS FROM ACCOMMODATION (\$'000)									
<i>March quarter 1995</i>	63,961	30,284	94,245	1,748	5,031	6,779	430	3,737	4,167
<i>1996—</i>									
January	21,488	10,130	31,618	631	2,042	2,674	145	1,562	1,707
February	25,092	10,728	35,820	720	1,460	2,181	119	995	1,114
March	30,272	12,292	42,564	767	1,686	2,453	130	1,251	1,381
<i>March quarter 1996</i>	76,853	33,149	110,002	2,119	5,188	7,307	394	3,809	4,203

TABLE 6 — HOTELS, MOTELS AND GUEST HOUSES WITH FACILITIES BY STATISTICAL DIVISION (a),
VICTORIA - continued

Particulars	Central Highlands (SD)			Wimmera and Mallee (SDs)		
	Licensed hotels	Motels etc.	Total	Licensed hotels	Motels etc.	Total
ESTABLISHMENTS, CAPACITY AND EMPLOYMENT						
<i>March quarter 1995</i> —						
Establishments	11	47	58	10	107	117
Guest rooms	202	1 975	1 177	226	2 202	2 428
Bed spaces	552	3 060	3 612	538	6 848	7 386
Employment (persons)	162	391	553	185	594	779
<i>March quarter 1996</i> —						
Establishments	11	48	59	9	110	119
Guest rooms	217	992	1 209	213	2 240	2 453
Bed spaces	585	3 154	3 739	486	6 906	7 392
Employment (persons)	164	387	551	168	612	780
ROOM NIGHTS OCCUPIED ('000)						
<i>March quarter 1995</i>	9.0	45.8	54.8	7.2	78.6	85.8
<i>1996</i> —						
January	3.1	14.9	18.1	2.4	28.8	31.2
February	2.8	13.6	16.4	2.0	24.7	26.8
March	3.6	18.6	22.2	2.7	32.6	35.3
<i>March quarter 1996</i>	9.5	47.1	56.7	7.1	86.1	93.2
ROOM OCCUPANCY RATES (per cent)						
<i>March quarter 1995</i>	49.6	52.2	51.8	35.4	39.7	39.3
<i>1996</i> —						
January	46.6	49.7	49.2	36.5	41.4	41.0
February	44.7	47.2	46.8	32.9	38.1	37.6
March	53.5	60.6	59.3	41.0	46.9	46.4
<i>March quarter 1996</i>	48.4	52.7	51.9	36.9	42.2	41.8
GUEST NIGHTS ('000)						
<i>March quarter 1995</i>	16.4	90.5	106.8	10.9	137.5	148.4
<i>1996</i> —						
January	6.6	33.2	39.7	3.9	57.6	61.5
February	5.0	26.2	31.1	2.9	41.1	44.1
March	6.6	36.4	43.0	3.9	55.0	58.9
<i>March quarter 1996</i>	18.1	95.8	113.9	10.8	153.6	164.4
BED OCCUPANCY RATES (per cent)						
<i>March quarter 1995</i>	32.9	32.9	32.9	22.5	22.3	22.3
<i>1996</i> —						
January	36.2	34.6	34.8	26.2	26.9	26.8
February	29.3	28.6	28.7	20.8	20.5	20.5
March	36.3	37.3	37.1	26.1	25.7	25.7
<i>March quarter 1996</i>	34.0	33.6	33.7	24.4	24.4	24.4
GUEST ARRIVALS ('000)						
<i>March quarter 1995</i>	10.8	55.9	66.6	6.6	91.8	98.5
<i>1996</i> —						
January	4.0	20.4	24.5	2.3	37.8	40.1
February	3.2	15.9	19.1	2.0	27.2	29.1
March	3.5	22.0	25.5	2.5	38.3	40.8
<i>March quarter 1996</i>	10.8	58.4	69.2	6.8	103.3	110.1
AVERAGE LENGTH OF STAY (days)						
<i>March quarter 1995</i>	1.5	1.6	1.6	1.6	1.5	1.5
<i>March quarter 1996</i>	1.7	1.6	1.6	1.6	1.5	1.5
TAKINGS FROM ACCOMMODATION (\$'000)						
<i>March quarter 1995</i>	681	3 059	3 741	379	4 266	4 645
<i>1996</i> —						
January	271	1 075	1 346	138	1 696	1 833
February	220	959	1 178	120	1 355	1 475
March	280	1 292	1 572	155	1 822	1 977
<i>March quarter 1996</i>	771	3 326	4 096	413	4 873	5 285

TABLE 6 — HOTELS, MOTELS AND GUEST HOUSES WITH FACILITIES BY STATISTICAL DIVISION (a),
VICTORIA—continued

Particulars	Loddon (SD) (a)			Goulburn (SD) (a)			Ovens-Murray (SD)		
	Licensed hotels	Motels etc.	Total	Licensed hotels	Motels etc.	Total	Licensed hotels	Motels etc.	Total
ESTABLISHMENTS, CAPACITY AND EMPLOYMENT									
<i>March quarter 1995—</i>									
Establishments	10	72	82	22	90	112	14	89	103
Guest rooms	123	1,381	1,504	500	1,696	2,196	276	1,800	2,076
Bed spaces	343	4,248	4,591	1,602	5,288	6,890	858	5,811	6,669
Employment (persons)	108	471	579	351	505	856	109	437	546
<i>March quarter 1996—</i>									
Establishments	11	49	60	25	116	141	13	87	100
Guest rooms	128	924	1,052	619	2,242	2,861	255	1,732	1,987
Bed spaces	320	2,859	3,179	1,920	6,909	8,829	846	5,621	6,467
Employment (persons)	125	313	438	479	713	1,192	118	468	586
ROOM NIGHTS OCCUPIED ('000)									
<i>March quarter 1995</i>	3.1	59.9	63.0	14.3	57.3	71.5	5.9	56.0	61.9
<i>1996—</i>									
January	1.2	13.4	14.6	5.5	29.3	34.8	1.8	20.2	22.1
February	1.2	11.9	13.1	5.0	24.9	30.0	1.2	15.4	16.6
March	1.5	17.1	18.7	6.2	30.7	37.0	1.6	21.6	23.2
<i>March quarter 1996</i>	3.9	42.5	46.4	16.8	85.0	101.7	4.6	57.2	61.8
ROOM OCCUPANCY RATES (per cent)									
<i>March quarter 1995</i>	28.0	48.2	46.5	31.7	37.6	36.2	23.8	34.6	33.1
<i>1996—</i>									
January	29.6	46.8	44.7	28.6	42.2	39.3	23.3	37.7	35.8
February	32.1	44.5	43.0	28.1	38.3	36.1	15.7	30.7	28.8
March	38.2	59.8	57.2	32.5	44.5	41.9	20.2	40.2	37.6
<i>March quarter 1996</i>	33.3	50.5	48.4	29.8	41.7	39.1	19.8	36.3	34.2
GUEST NIGHTS ('000)									
<i>March quarter 1995</i>	4.5	114.2	118.7	22.5	103.2	125.8	11.1	113.1	124.2
<i>1996—</i>									
January	2.0	27.4	29.4	9.9	59.5	69.4	3.6	43.6	47.2
February	1.9	19.3	21.2	8.1	44.9	53.0	1.7	28.8	30.5
March	2.4	30.5	32.8	9.9	55.5	65.5	2.7	40.0	42.7
<i>March quarter 1996</i>	6.3	77.2	83.5	27.9	160.0	187.9	8.0	112.4	120.3
BED OCCUPANCY RATES (per cent)									
<i>March quarter 1995</i>	14.5	29.9	28.7	15.6	21.7	20.3	14.4	21.6	20.7
<i>1996—</i>									
January	20.6	30.9	29.9	16.6	27.8	25.4	13.6	25.0	23.5
February	20.3	23.3	23.0	14.5	22.4	20.7	7.0	17.7	16.3
March	23.8	34.4	33.3	16.7	26.1	24.0	10.2	22.9	21.3
<i>March quarter 1996</i>	21.6	29.7	28.9	16.0	25.5	23.4	10.3	22.0	20.4
GUEST ARRIVALS ('000)									
<i>March quarter 1995</i>	3.1	76.8	79.9	14.0	64.2	78.2	6.7	61.6	68.3
<i>1996—</i>									
January	1.1	18.0	19.0	6.0	35.4	41.4	1.7	22.7	24.4
February	1.0	13.7	14.7	5.1	28.0	33.1	1.0	16.3	17.2
March	1.2	20.4	21.6	6.3	34.4	40.7	1.7	22.5	24.2
<i>March quarter 1996</i>	3.2	52.1	55.3	17.4	97.9	115.3	4.4	61.5	65.8
AVERAGE LENGTH OF STAY (days)									
<i>March quarter 1995</i>	1.4	1.5	1.5	1.6	1.6	1.6	1.7	1.8	1.8
<i>March quarter 1996</i>	2.0	1.5	1.5	1.6	1.6	1.6	1.8	1.8	1.8
TAKINGS FROM ACCOMMODATION (\$'000)									
<i>March quarter 1995</i>	161	3,863	4,024	824	3,752	4,576	218	3,173	3,391
<i>1996—</i>									
January	86	895	981	367	1,944	2,311	78	1,301	1,379
February	88	766	855	324	1,656	1,980	37	887	924
March	132	1,124	1,256	415	1,970	2,385	54	1,193	1,247
<i>March quarter 1996</i>	307	2,785	3,092	1,106	5,570	6,676	168	3,381	3,550

TABLE 6—HOTELS, MOTELS AND GUEST HOUSES WITH FACILITIES BY STATISTICAL DIVISION (a),
VICTORIA—continued

Particulars	East Gippsland (SD)			Gippsland (SD)			Victoria		
	Licensed hotels	Motels etc.	Total	Licensed hotels	Motels etc.	Total	Licensed hotels	Motels etc.	Total
ESTABLISHMENTS, CAPACITY AND EMPLOYMENT									
<i>March quarter 1995—</i>									
Establishments	8	60	68	16	54	70	187	816	1,003
Guest rooms	126	1,184	1,310	237	1,198	1,435	10,121	19,852	29,973
Bed spaces	406	3,534	3,940	657	3,527	4,184	24,557	58,023	82,580
Employment (persons)	75	407	482	250	357	607	9,795	6,619	16,414
<i>March quarter 1996—</i>									
Establishments	13	64	77	13	49	62	196	823	1,019
Guest rooms	225	1,255	1,480	143	1,131	1,274	10,103	19,788	29,891
Bed spaces	569	3,715	4,284	415	3,240	3,655	24,769	58,170	82,939
Employment (persons)	112	395	507	231	359	590	9,835	6,751	16,586
ROOM NIGHTS OCCUPIED ('000)									
<i>March quarter 1995</i>	4.3	52.1	56.4	7.3	45.4	52.8	599.5	907.4	1,506.9
<i>1996—</i>									
January	2.6	20.9	23.5	1.5	15.5	17.0	190.9	315.3	506.2
February	1.8	15.2	17.0	1.3	13.2	14.5	207.8	287.9	495.7
March	2.0	17.7	19.7	1.5	15.9	17.4	224.5	341.8	566.3
<i>March quarter 1996</i>	6.4	53.8	60.1	4.3	44.6	48.9	623.2	945.0	1,568.2
ROOM OCCUPANCY RATES (per cent)									
<i>March quarter 1995</i>	38.1	48.9	47.8	34.4	42.1	40.9	65.9	50.8	55.9
<i>1996—</i>									
January	37.2	53.7	51.2	34.8	44.8	43.7	61.0	51.5	54.7
February	26.9	41.8	39.5	30.2	40.5	39.3	70.9	50.2	57.2
March	29.2	45.4	42.9	33.1	45.3	44.0	71.7	55.8	61.1
<i>March quarter 1996</i>	31.2	47.1	44.7	32.7	43.6	42.4	67.8	52.5	57.7
GUEST NIGHTS ('000)									
<i>March quarter 1995</i>	10.0	104.1	114.1	11.7	85.5	97.2	945.5	1,603.7	2,549.1
<i>1996—</i>									
January	5.5	46.2	51.6	3.1	33.7	36.7	319.2	631.0	950.1
February	3.0	26.8	29.8	2.2	22.3	24.5	310.9	485.7	796.6
March	3.6	31.9	35.5	2.6	27.3	29.9	335.5	588.2	923.6
<i>March quarter 1996</i>	12.1	104.9	116.9	7.8	83.3	91.1	965.5	1,704.8	2,670.3
BED OCCUPANCY RATES (per cent)									
<i>March quarter 1995</i>	27.4	32.7	32.2	19.8	26.9	25.8	42.8	30.7	34.3
<i>1996—</i>									
January	31.0	40.1	38.9	23.9	33.9	32.7	41.6	35.1	37.0
February	18.2	24.9	24.0	18.1	23.8	23.1	43.3	28.8	33.1
March	20.3	27.7	26.7	20.1	27.2	26.4	43.7	32.6	35.9
<i>March quarter 1996</i>	23.3	31.0	30.0	20.7	28.4	27.5	42.9	32.2	35.4
GUEST ARRIVALS ('000)									
<i>March quarter 1995</i>	5.8	64.6	70.5	7.2	52.7	59.9	435.6	914.4	1,350.0
<i>1996—</i>									
January	3.3	26.8	30.1	2.1	18.8	20.9	138.0	339.6	477.7
February	2.0	17.7	19.7	1.6	13.6	15.2	158.0	279.7	437.7
March	2.2	20.8	23.1	1.7	16.2	17.9	169.0	335.6	504.6
<i>March quarter 1996</i>	7.5	65.3	72.8	5.5	48.5	54.0	465.0	955.0	1,420.0
AVERAGE LENGTH OF STAY (days)									
<i>March quarter 1995</i>	1.7	1.6	1.6	1.6	1.6	1.6	2.2	1.8	1.9
<i>March quarter 1996</i>	1.6	1.6	1.6	1.4	1.7	1.7	2.1	1.8	1.9
TAKINGS FROM ACCOMMODATION (\$'000)									
<i>March quarter 1995</i>	240	3,204	3,443	286	2,604	2,889	68,928	62,972	131,900
<i>1996—</i>									
January	134	1,427	1,561	77	1,064	1,140	23,415	23,135	46,551
February	76	891	966	57	793	850	26,854	20,490	47,343
March	85	1,024	1,109	68	974	1,042	32,357	24,628	56,985
<i>March quarter 1996</i>	295	3,342	3,637	202	2,830	3,032	82,626	68,253	150,879

(a) Changed geographic boundaries effective from 1 July 1995 have affected the distribution of individual establishments among the various Statistical Divisions, including radical changes applicable for Loddon and Goulburn SDs respectively.

AND SELECTED STATISTICAL LOCAL AREAS, VICTORIA, MARCH QUARTER 1996

<i>Guest nights</i>				<i>Guest arrivals</i>				<i>Takings from accommodation (\$'000)</i>			
<i>Jan.</i>	<i>Feb.</i>	<i>Mar.</i>	<i>Mar. qtr</i>	<i>Jan.</i>	<i>Feb.</i>	<i>Mar.</i>	<i>Mar. qtr</i>	<i>Jan.</i>	<i>Feb.</i>	<i>Mar.</i>	<i>Mar. qtr</i>
6,037	6,356	5,921	18,314	3,937	4,208	3,941	12,086	296	353	327	976
879	948	1,251	3,078	830	821	1,058	2,709	28	31	41	101
3,982	3,709	4,696	12,387	2,284	2,442	2,703	7,429	215	229	271	715
7,426	7,907	8,759	24,092	2,937	3,059	3,779	9,775	297	337	388	1,022
3,242	4,411	4,321	11,974	1,978	2,406	2,520	6,904	163	245	245	652
14,610	15,188	16,446	46,244	8,760	9,023	10,699	28,482	814	944	1,074	2,833
4,891	5,144	6,392	16,427	2,206	2,493	2,864	7,563	279	360	441	1,081
2,666	3,945	4,628	11,239	1,418	2,016	2,126	5,560	167	286	354	807
1,512	1,733	1,916	5,161	815	960	945	2,720	96	114	131	341
1,609	2,136	2,160	5,905	1,489	1,992	2,080	5,561	75	101	106	281
2,665	3,057	3,523	9,245	1,662	2,011	2,183	5,856	110	153	176	439
176,728	170,172	187,923	534,823	63,401	78,281	87,078	228,760	13,921	15,454	18,854	48,229
121,221	119,810	126,915	367,946	46,386	52,279	54,103	152,768	7,809	9,063	10,414	27,286
4,246	4,021	4,633	12,900	1,679	1,491	1,905	5,075	175	197	220	592
2,861	3,615	4,109	10,585	1,143	1,599	1,721	4,463	227	332	362	922
3,006	3,202	3,842	10,050	1,429	1,534	1,616	4,579	132	141	171	444
2,183	1,969	2,004	6,156	1,419	1,321	1,238	3,978	71	71	81	223
4,853	4,128	4,781	13,762	1,358	1,379	1,482	4,219	191	164	203	557
2,732	1,402	1,771	5,905	810	601	866	2,277	95	55	65	214
11,227	7,464	8,264	26,955	5,777	4,237	4,939	14,953	600	442	486	1,528
2,182	1,842	2,301	6,325	1,334	1,100	1,193	3,627	93	83	92	268
24,578	20,154	23,051	67,783	9,615	9,067	8,761	27,443	1,161	1,114	1,396	3,671
38,749	44,127	42,774	125,650	20,427	27,665	24,360	72,452	2,138	2,798	3,736	8,672
12,139	9,341	10,717	32,197	3,395	3,583	4,269	11,247	883	903	993	2,779
2,130	2,933	3,466	8,529	1,040	1,606	1,595	4,241	96	129	151	376
3,148	3,610	3,773	10,531	1,783	2,293	2,314	6,390	179	220	217	615
3,937	3,284	3,361	10,582	1,638	1,750	1,848	5,236	130	119	118	367
3,638	1,988	1,801	7,427	1,189	839	790	2,818	170	154	133	456
2,368	2,890	3,118	8,376	1,318	1,745	1,691	4,754	64	68	75	207
2,594	3,320	3,785	9,699	1,757	2,109	2,386	6,252	118	181	201	500
15,339	14,932	15,118	45,389	9,043	9,713	9,750	28,506	826	979	1,042	2,848
489,378	478,738	517,520	1,485,636	204,257	235,623	248,803	688,683	31,618	35,820	42,564	110,002
11,903	7,729	7,574	27,206	6,112	4,914	4,704	15,730	500	285	267	1,052
2,918	2,376	3,085	8,379	2,511	1,797	2,503	6,811	80	67	90	237
8,083	7,039	9,826	24,948	4,891	4,095	5,685	14,671	347	444	570	1,361
2,838	1,990	2,603	7,431	1,613	1,224	1,492	4,329	119	89	108	316
3,989	2,896	4,392	11,277	2,960	2,113	2,820	7,893	133	108	140	381
2,632	1,809	2,239	6,680	1,941	1,279	1,852	5,072	100	61	87	248
7,091	4,114	4,631	15,836	2,860	1,975	2,204	7,039	201	111	133	445
4,115	3,165	3,558	10,838	2,330	1,762	2,193	6,285	150	121	133	404
9,000	5,993	6,465	21,458	4,786	4,000	3,994	12,780	291	187	220	698
21,348	14,608	13,169	49,125	7,571	6,784	5,858	20,213	754	706	705	2,165
73,917	51,719	57,542	183,178	37,575	29,943	33,305	100,823	2,674	2,181	2,453	7,307
1,925	1,491	1,904	5,320	1,390	986	1,422	3,798	55	42	58	156
5,738	3,523	3,880	13,141	4,280	3,122	3,459	10,861	200	109	132	441
6,476	5,201	5,680	17,357	4,726	3,702	4,235	12,663	213	191	202	606
1,433	914	1,170	3,517	959	709	877	2,545	36	24	31	91
4,685	2,721	3,487	10,895	2,744	1,870	1,753	6,367	158	97	120	376
1,233	658	710	2,601	1,026	543	565	2,134	36	16	19	71
2,541	2,546	2,735	7,822	1,914	1,938	2,102	5,954	80	92	103	275
1,475	1,465	1,693	4,633	1,181	1,063	1,315	3,559	53	61	69	182
25,655	13,360	19,125	58,140	17,119	9,990	12,946	40,055	876	481	648	2,006
51,161	31,881	40,384	123,426	35,339	23,923	28,674	87,936	1,707	1,114	1,381	4,203
1,941	1,617	2,466	6,024	1,666	1,380	2,104	5,150	67	57	88	212
24,127	19,349	25,950	69,426	14,201	10,554	14,349	39,104	754	665	850	2,269
7,948	5,497	8,512	21,957	5,073	4,229	5,299	14,601	249	212	307	768
4,144	3,177	4,191	11,512	2,449	1,802	2,305	6,556	192	179	248	620
1,568	1,510	1,898	4,976	1,078	1,180	1,487	3,745	84	65	78	227
39,728	31,150	43,017	113,895	24,467	19,145	25,544	69,156	1,346	1,178	1,572	4,096
1,840	1,522	1,787	5,149	1,417	1,186	1,439	4,042	45	44	52	141
7,687	6,054	8,919	22,660	6,245	4,799	6,670	17,714	264	245	335	844
516	534	862	1,912	391	377	711	1,479	15	16	23	54
10,371	5,478	8,993	24,842	6,269	3,639	5,623	15,531	321	183	308	812
661	852	721	2,234	444	379	569	1,392	18	23	23	63
723	746	784	2,253	559	482	601	1,642	17	19	21	58
21,798	15,186	22,066	59,050	15,325	10,862	15,613	41,800	680	530	762	1,973

TABLE 7—HOTELS, MOTELS AND GUEST HOUSES WITH FACILITIES: STATISTICAL DIVISIONS

Statistical Divisions and selected Statistical Local Areas	Establish- ments	Guest rooms	Bed spaces	Employ- ment (persons)	Room nights occupied				Room occupancy rates (per cent)				
					Jan.	Feb.	Mar.	Mar. qtr	Jan.	Feb.	Mar.	Mar. qtr	
Buloke (S)													
North	3	37	105	5	247	198	489	934	21.5	18.5	42.6	27.7	
South	4	55	164	16	554	624	746	1,924	32.5	39.1	43.8	38.4	
Gannawarra (S)	5	94	241	39	544	689	997	2,230	18.7	25.3	34.2	26.1	
Mildura (RC)													
Part A	34	926	2,827	317	12,097	10,359	13,426	35,882	42.1	38.6	46.8	42.6	
Part B	3	41	112	13	602	467	567	1,636	47.4	39.3	44.6	43.8	
Swan Hill (RC)													
Central	15	357	1,087	135	5,340	4,528	5,332	15,200	48.3	43.7	48.2	46.8	
Balance	6	90	289	16	752	553	893	2,198	27.0	21.2	32.0	26.8	
Mallee (SD)	70	1,600	4,825	541	20,136	17,418	22,450	60,004	40.6	37.5	45.3	41.2	
Central Goldfields (S)	9	93	255	35	1,144	1,070	1,669	3,883	39.7	39.7	57.9	45.9	
Greater Bendigo (C) — Part A													
Central	25	536	1,647	222	8,584	7,308	10,527	26,419	51.7	47.0	63.4	54.2	
Remainder	5	153	493	72	2,330	2,015	2,838	7,183	49.1	45.4	59.8	51.6	
Greater Bendigo (C) — Part B	4	40	137	21	244	189	317	750	19.7	16.3	25.6	20.6	
Loddon (S)	4	48	164	10	390	281	478	1,149	26.2	20.2	32.1	26.3	
Macedon Ranges (S)													
Kyneton	3	26	75	6	370	407	470	1,247	45.9	54.0	58.3	52.7	
Remainder	4	75	191	53	616	848	1,258	2,722	26.5	39.0	54.1	39.9	
Mount Alexander (S)	6	81	217	19	912	991	1,097	3,000	36.3	42.2	43.7	40.7	
Loddon (SD)	60	1,052	3,179	438	14,590	13,109	18,654	46,353	44.7	43.0	57.2	48.4	
Campaspe (S)													
Echuca	19	415	1,268	158	7,906	6,056	7,538	21,500	61.5	50.3	58.6	56.9	
Remainder	7	99	282	47	1,233	1,130	1,426	3,789	40.2	39.4	46.5	42.1	
Delatite (S)													
Benalla	8	132	419	26	1,503	1,793	2,092	5,388	36.7	46.8	51.1	44.9	
Remainder (a)	23	579	2,066	182	4,394	3,222	3,924	11,540	24.5	19.2	21.9	21.9	
Greater Shepparton (C)	25	582	1,679	321	7,684	7,207	8,698	23,589	42.6	42.7	49.3	44.9	
Mitchell (S)													
North	6	106	332	62	1,468	1,612	1,710	4,790	44.7	52.4	52.0	49.7	
South	4	54	161	9	493	537	438	1,468	29.5	34.3	26.2	29.9	
Moira (S)	16	280	837	69	3,803	2,727	4,337	10,867	43.8	33.6	50.0	42.6	
Murrindindi (S)													
East	23	500	1,433	275	4,980	4,527	5,552	15,059	32.1	31.2	35.8	33.1	
West	3	26	72	20	437	308	311	1,056	54.2	40.8	38.6	44.6	
Strathbogie (S)	7	88	280	23	937	836	927	2,700	34.3	32.8	34.0	33.7	
Goulburn (SD)	141	2,861	8,829	1,192	34,838	29,955	36,953	101,746	39.3	36.1	41.9	39.1	
Alpine (S)													
East (a)	51	1,111	3,895	267	10,225	6,180	9,179	25,584	29.7	19.2	26.7	25.3	
West	3	62	194	26	768	569	1,211	2,548	40.0	31.6	63.0	45.2	
Indigo (S)													
Part A	7	100	284	38	1,655	1,165	1,672	4,492	53.4	40.2	53.9	49.4	
Part B	6	66	191	16	926	538	942	2,406	45.3	28.1	46.0	40.1	
Milawa (S)													
Wangaratta	13	301	839	133	3,815	4,060	4,590	12,465	40.9	46.5	49.2	45.5	
Remainder	3	30	93	6	235	157	174	566	25.3	18.0	18.7	20.7	
Towong (S)	6	97	310	42	1,149	1,143	1,274	3,566	38.2	40.6	42.4	40.4	
Wodonga (RC)	11	220	661	58	3,293	2,764	4,122	10,179	48.3	43.3	60.4	50.8	
Ovens-Murray (SD)	100	1,987	6,467	586	22,066	16,576	23,164	61,806	35.8	28.8	37.6	34.2	
East Gippsland (S)													
Bairnsdale	39	769	2,258	287	13,668	9,741	11,257	34,666	57.3	43.7	47.2	49.5	
Orbost	12	169	544	62	2,624	1,557	2,009	6,190	50.1	31.8	38.3	40.2	
Remainder	4	45	171	23	1,008	345	527	1,880	72.3	26.4	37.8	45.9	
Wellington (S)													
Alberton	5	75	218	24	732	585	832	2,149	31.5	26.9	35.8	31.5	
Rosedale	13	377	972	92	5,092	4,400	4,658	14,150	43.6	40.2	39.9	41.2	
Remainder	4	45	121	19	352	346	412	1,110	25.2	26.5	29.5	27.1	
East Gippsland (SD)	77	1,480	4,284	507	23,476	16,974	19,695	60,145	51.2	39.5	42.9	44.7	
Bass Coast (S)													
Phillip Island	11	281	918	158	6,200	3,688	4,036	13,924	71.2	45.3	46.3	54.5	
Balance	7	83	242	47	1,502	982	1,151	3,635	58.4	40.8	44.7	48.1	
Baw Baw (S)	12	202	549	82	1,653	1,847	2,399	5,899	26.4	31.5	38.3	32.1	
La Trobe (S)													
Traralgon	10	244	603	97	2,684	2,912	3,591	9,187	35.5	41.2	47.5	41.4	
Remainder	12	301	877	139	2,685	3,387	4,021	10,093	30.3	39.1	43.1	37.6	
South Gippsland (S)													
East	6	92	266	42	1,377	829	1,132	3,338	48.3	31.1	39.7	39.9	
Remainder	4	71	200	25	942	856	1,028	2,826	42.8	41.6	46.7	43.7	
Gippsland (SD)	62	1,274	3,655	590	17,043	14,501	17,358	48,902	43.7	39.3	44.0	42.4	
Total Victoria	1,019	29,891	82,939	16,586	506,225	495,676	566,267	1,568,168	54.7	57.2	61.1	57.7	

(a) Snow field resorts are included continuously as capacity (potentially) available irrespective of any off season closures. The average occupancy rates of establishments in Alpine (S) and Delatite (S) actually remaining open during the snow fields off season, therefore, are significantly higher than the overall rates published.

AND SELECTED STATISTICAL LOCAL AREAS, VICTORIA, MARCH QUARTER 1996 (a)—continued

<i>Guest nights</i>				<i>Guest arrivals</i>				<i>Takings from accommodation (\$'000)</i>			
<i>Jan.</i>	<i>Feb.</i>	<i>Mar.</i>	<i>Mar. qtr</i>	<i>Jan.</i>	<i>Feb.</i>	<i>Mar.</i>	<i>Mar. qtr</i>	<i>Jan.</i>	<i>Feb.</i>	<i>Mar.</i>	<i>Mar. qtr</i>
318	246	688	1,252	271	246	580	1,097	9	8	21	39
1,108	1,088	1,216	3,412	831	787	789	2,407	28	32	35	95
959	1,014	1,596	3,569	725	772	1,314	2,811	30	55	54	119
24,273	16,934	21,879	63,086	14,123	10,371	13,998	38,492	679	554	723	1,955
1,058	739	936	2,733	912	615	806	2,333	25	20	27	73
10,526	7,969	8,864	27,359	6,812	4,840	6,553	18,205	348	273	313	935
1,469	875	1,637	3,981	1,116	643	1,172	2,931	34	22	41	97
39,711	28,865	36,816	105,392	24,790	18,274	25,212	68,276	1,153	944	1,215	3,313
2,000	1,614	2,600	6,214	1,358	1,075	1,740	4,173	58	50	79	187
17,846	11,951	19,185	48,982	11,396	8,631	12,607	32,634	601	485	724	1,810
4,717	3,303	4,991	13,011	2,772	2,138	3,283	8,193	171	153	216	540
508	408	585	1,501	343	314	336	993	13	10	16	40
765	455	844	2,064	431	313	513	1,257	17	12	20	50
668	583	760	2,011	495	396	568	1,459	16	18	21	55
1,072	1,274	1,792	4,138	825	815	1,056	2,696	46	66	109	221
1,867	1,615	2,069	5,551	1,406	1,028	1,475	3,909	59	59	70	188
29,443	21,203	32,826	83,472	19,026	14,710	21,578	55,314	981	855	1,256	3,092
17,170	12,370	14,716	44,256	12,043	8,397	10,471	30,911	551	434	506	1,491
2,642	1,986	2,538	7,166	1,140	1,037	1,484	3,661	71	65	80	216
2,640	2,916	3,308	8,864	1,769	1,872	2,287	5,928	94	98	111	302
11,021	6,771	8,616	26,408	6,280	4,397	5,275	15,952	379	285	325	989
13,238	11,045	13,316	37,599	8,050	7,026	8,530	23,606	471	442	519	1,432
2,844	2,665	2,954	8,463	1,793	1,711	2,002	5,506	104	115	128	347
868	880	754	2,502	706	661	643	2,010	25	26	22	73
7,148	4,789	7,578	19,515	3,529	2,813	3,777	10,119	188	119	174	481
8,908	7,209	9,331	25,448	4,305	3,623	4,544	12,472	361	341	460	1,162
807	594	592	1,993	572	395	449	1,416	19	13	13	46
2,128	1,758	1,774	5,660	1,263	1,189	1,283	3,735	48	43	47	138
69,414	52,983	65,477	187,874	41,450	33,121	40,745	115,316	2,311	1,980	2,385	6,676
22,571	13,080	18,964	54,615	9,465	5,802	9,398	24,665	677	340	508	1,525
1,346	930	1,286	3,562	685	489	559	1,733	45	29	38	112
3,654	2,339	3,310	9,303	2,658	1,686	2,349	6,693	114	74	104	292
1,995	1,052	1,861	4,908	1,056	710	1,110	2,876	47	26	48	121
7,520	6,070	7,508	21,098	4,509	4,046	4,842	13,397	232	225	265	723
452	282	315	1,049	399	239	272	910	12	7	10	29
2,248	2,095	2,372	6,715	1,470	1,135	1,389	3,994	68	72	81	221
7,391	4,655	7,038	19,084	4,188	3,133	4,238	11,559	184	152	192	527
47,177	30,503	42,654	120,334	24,430	17,240	24,157	65,827	1,379	924	1,247	3,550
32,163	18,669	22,115	72,947	19,211	12,230	14,137	45,578	961	557	642	2,160
6,409	2,793	3,894	13,096	4,563	2,265	2,889	9,717	172	83	105	360
1,938	527	813	3,278	922	368	515	1,805	48	16	29	93
1,396	972	1,366	3,734	1,032	795	865	2,692	35	27	37	99
9,169	6,340	6,641	22,150	3,866	3,628	4,085	11,579	327	266	279	872
568	526	631	1,725	475	409	564	1,448	18	17	18	53
51,643	29,827	35,460	116,930	30,069	19,695	23,055	72,819	1,561	966	1,109	3,637
17,304	8,227	9,251	34,782	7,800	4,686	4,926	17,412	513	253	292	1,057
3,466	1,913	2,197	7,576	2,487	1,443	1,562	5,492	90	53	62	206
3,109	3,020	4,087	10,216	2,450	1,863	2,572	6,885	97	109	142	348
4,118	3,846	4,660	12,624	2,134	2,322	2,630	7,086	145	160	200	506
4,001	4,610	5,705	14,316	2,658	2,807	3,515	8,980	146	180	220	546
2,997	1,568	2,184	6,749	2,235	1,276	1,506	5,017	98	51	72	222
1,750	1,316	1,786	4,852	1,167	786	1,182	3,135	51	43	53	147
36,745	24,500	29,870	91,115	20,931	15,183	17,893	54,007	1,140	850	1,042	3,032
950,115	796,555	923,632	2,670,302	477,659	437,719	504,579	1,419,957	46,551	47,343	56,985	150,879

TABLE 8 — HOLIDAY FLATS, UNITS AND HOUSES BY STATISTICAL DIVISION (a), VICTORIA

Particulars	Melbourne (SD)	Barwon (SD)	Western District (SD)	Wimmera (SD)	Mallee (SD)	Loddon (SD)
			and Central Highlands (SD)			
LETTING ENTITIES, CAPACITY AND EMPLOYMENT						
<i>March quarter 1995—</i>						
Letting entities	42	24	16	10	8	5
Flats, units and houses						
Single bedroom	732	59	26	52	14	9
Multiple bedroom	729	468	111	65	75	25
<i>Total flats, units and houses</i>	<i>1,461</i>	<i>527</i>	<i>137</i>	<i>117</i>	<i>89</i>	<i>34</i>
Bed spaces	5,244	2,610	609	507	392	161
Employment (persons) (b)	307	67	41	30	19	11
<i>March quarter 1996—</i>						
Letting entities	40	26	19	10	7	4
Flats, units and houses						
Single bedroom	783	56	33	52	14	8
Multiple bedroom	715	522	125	67	59	21
<i>Total flats, units and houses</i>	<i>1,498</i>	<i>578</i>	<i>158</i>	<i>119</i>	<i>73</i>	<i>29</i>
Bed spaces	5,239	3,025	683	527	323	139
Employment (persons) (b)	326	70	48	31	18	7
UNIT NIGHTS OCCUPIED						
<i>March quarter 1995</i>	<i>85,349</i>	<i>22,804</i>	<i>6,803</i>	<i>6,181</i>	<i>3,204</i>	<i>1,665</i>
<i>1996—</i>						
January	34,328	13,688	3,711	2,630	1,509	576
February	29,358	5,402	2,016	1,662	639	452
March	30,717	4,550	2,260	2,220	1,103	552
<i>March quarter 1996</i>	<i>94,403</i>	<i>23,640</i>	<i>7,987</i>	<i>6,512</i>	<i>3,251</i>	<i>1,580</i>
UNIT OCCUPANCY RATES (per cent)						
<i>March quarter 1995</i>	<i>64.9</i>	<i>48.1</i>	<i>55.2</i>	<i>58.7</i>	<i>40.0</i>	<i>54.4</i>
<i>1996—</i>						
January	73.9	76.4	75.8	71.3	66.7	64.1
February	68.2	32.2	45.0	48.2	30.2	53.7
March	66.8	25.4	48.3	60.2	48.7	61.4
<i>March quarter 1996</i>	<i>69.7</i>	<i>44.9</i>	<i>56.8</i>	<i>60.1</i>	<i>48.9</i>	<i>59.9</i>
UNIT LETTINGS						
<i>March quarter 1995</i>	<i>15,453</i>	<i>4,282</i>	<i>2,166</i>	<i>2,308</i>	<i>804</i>	<i>566</i>
<i>1996—</i>						
January	4,969	2,032	853	730	328	170
February	4,549	1,310	620	681	164	148
March	4,823	1,535	710	822	299	184
<i>March quarter 1996</i>	<i>14,341</i>	<i>4,877</i>	<i>2,183</i>	<i>2,233</i>	<i>791</i>	<i>502</i>
AVERAGE LENGTH OF STAY (days)						
<i>March quarter 1995</i>	<i>5.5</i>	<i>5.3</i>	<i>3.1</i>	<i>2.7</i>	<i>4.0</i>	<i>2.9</i>
<i>1996—</i>						
January	6.9	6.7	4.4	3.6	4.6	3.4
February	6.5	4.1	3.3	2.4	3.9	3.1
March	6.4	3.0	3.2	2.7	3.7	3.0
<i>March quarter 1996</i>	<i>6.6</i>	<i>4.8</i>	<i>3.7</i>	<i>2.9</i>	<i>4.1</i>	<i>3.1</i>
TAKINGS FROM ACCOMMODATION (\$'000)						
<i>March quarter 1995</i>	<i>8,123</i>	<i>1,626</i>	<i>449</i>	<i>427</i>	<i>167</i>	<i>90</i>
<i>1996—</i>						
January	3,419	1,093	269	197	96	29
February	2,909	401	131	111	33	21
March	3,146	333	148	149	52	26
<i>March quarter 1996</i>	<i>9,474</i>	<i>1,827</i>	<i>549</i>	<i>457</i>	<i>180</i>	<i>76</i>

TABLE 8 — HOLIDAY FLATS, UNITS AND HOUSES BY STATISTICAL DIVISION (a), VICTORIA *continued*

Particulars	Victoria						Total
	Goulburn (SD)	Ovens- Murray (SD)	East Gippsland (SD)	Gippsland (SD)	Real estate agents	Other letting entities	
LETTING ENTITIES, CAPACITY AND EMPLOYMENT							
<i>March quarter 1995—</i>							
Letting entities	9	43	53	10	24	196	220
Flats, units and houses							
Single bedroom	29	81	99	35	78	1,058	1,136
Multiple bedroom	45	375	470	245	972	1,636	2,608
<i>Total flats, units and houses</i>	<i>74</i>	<i>456</i>	<i>569</i>	<i>280</i>	<i>1,050</i>	<i>2,694</i>	<i>3,744</i>
Bed spaces	382	2,403	2,734	1,783	6,005	10,820	16,825
Employment (persons) (b)	26	89	128	61		779	779
<i>March quarter 1996—</i>							
Letting entities	15	43	53	10	24	203	227
Flats, units and houses							
Single bedroom	36	103	104	36	67	1,158	1,225
Multiple bedroom	78	432	450	275	999	1,745	2,744
<i>Total flats, units and houses</i>	<i>114</i>	<i>535</i>	<i>554</i>	<i>311</i>	<i>1,066</i>	<i>2,903</i>	<i>3,969</i>
Bed spaces	567	2,874	2,599	1,887	6,172	11,691	17,863
Employment (persons) (b)	44	100	130	46	—	820	820
UNIT NIGHTS OCCUPIED							
<i>March quarter 1995</i>	<i>2,517</i>	<i>12,389</i>	<i>22,650</i>	<i>9,563</i>	<i>25,121</i>	<i>148,004</i>	<i>173,125</i>
<i>1996—</i>							
January	2,083	6,597	10,719	7,646	20,910	62,577	83,487
February	1,210	2,653	5,782	2,333	4,399	47,108	51,507
March	1,310	3,663	5,898	2,249	3,007	51,515	54,522
<i>March quarter 1996</i>	<i>4,603</i>	<i>12,913</i>	<i>22,399</i>	<i>12,228</i>	<i>28,316</i>	<i>161,200</i>	<i>189,516</i>
UNIT OCCUPANCY RATES (per cent)							
<i>March quarter 1995</i>	<i>37.8</i>	<i>30.2</i>	<i>44.2</i>	<i>37.9</i>	<i>26.6</i>	<i>61.0</i>	<i>51.4</i>
<i>1996—</i>							
January	58.9	39.8	62.4	79.3	63.3	69.5	67.9
February	36.6	17.1	36.0	25.9	14.4	56.0	44.9
March	37.1	22.1	34.3	23.3	9.2	57.4	44.5
<i>March quarter 1996</i>	<i>44.4</i>	<i>26.5</i>	<i>44.4</i>	<i>43.2</i>	<i>29.4</i>	<i>61.1</i>	<i>52.6</i>
UNIT LETTINGS							
<i>March quarter 1995</i>	<i>880</i>	<i>3,202</i>	<i>5,286</i>	<i>1,743</i>	<i>3,128</i>	<i>33,562</i>	<i>36,690</i>
<i>1996—</i>							
January	559	1,362	2,134	929	2,229	11,837	14,066
February	371	668	1,550	560	561	10,060	10,621
March	447	970	1,654	714	564	11,594	12,158
<i>March quarter 1996</i>	<i>1,377</i>	<i>3,000</i>	<i>5,338</i>	<i>2,203</i>	<i>3,354</i>	<i>33,491</i>	<i>36,845</i>
AVERAGE LENGTH OF STAY (days)							
<i>March quarter 1995</i>	<i>2.9</i>	<i>3.9</i>	<i>4.3</i>	<i>5.5</i>	<i>8.0</i>	<i>4.4</i>	<i>4.7</i>
<i>1996—</i>							
January	3.7	4.8	5.0	8.2	9.4	5.3	5.9
February	3.3	4.0	3.7	4.2	7.8	4.7	4.8
March	2.9	3.8	3.6	3.1	5.3	4.4	4.5
<i>March quarter 1996</i>	<i>3.3</i>	<i>4.3</i>	<i>4.2</i>	<i>5.6</i>	<i>8.4</i>	<i>4.8</i>	<i>5.1</i>
TAKINGS FROM ACCOMMODATION (\$'000)							
<i>March quarter 1995</i>	<i>161</i>	<i>676</i>	<i>1,387</i>	<i>626</i>	<i>1,618</i>	<i>12,114</i>	<i>13,733</i>
<i>1996—</i>							
January	132	422	773	402	1,348	5,483	6,831
February	85	147	325	138	235	4,066	4,301
March	98	188	338	154	164	4,468	4,633
<i>March quarter 1996</i>	<i>315</i>	<i>756</i>	<i>1,436</i>	<i>694</i>	<i>1,747</i>	<i>14,018</i>	<i>15,765</i>

(a) Changed geographic boundaries effective from 1 July 1995 have affected the distribution of individual letting entities among the various Statistical Divisions.

(b) Employment numbers exclude real estate agents and their employees.

TABLE 9 — CARAVAN PARKS BY STATISTICAL DIVISION (a), VICTORIA

Particulars	Melbourne (SD)			Barwon (SD)			Western District (SD)		
	Short-term	Long-term	Total	Short-term	Long-term	Total	Short-term	Long-term	Total
ESTABLISHMENTS, CAPACITY AND EMPLOYMENT									
<i>March quarter 1995—</i>									
Establishments	53	39	92	53	11	64	30	14	44
Capacity									
On-site vans	213	730	943	147	133	280	76	84	160
Other powered sites	4,261	2,528	6,789	8,145	675	8,820	3,094	516	3,610
Unpowered sites	990	300	1,290	850	75	925	1,411	186	1,597
Cabins, flats, etc.	230	458	688	393	86	479	214	67	281
<i>Total capacity</i>	<i>5,694</i>	<i>4,016</i>	<i>9,710</i>	<i>9,535</i>	<i>969</i>	<i>10,504</i>	<i>4,795</i>	<i>853</i>	<i>5,648</i>
Sites occupied by long-term guests	298	2,298	2,596	162	412	574	44	153	197
Other sites permanently reserved	2,117	71	2,188	3,891	12	3,903	170	16	186
Employment (persons)	165	164	329	232	39	271	92	46	138
<i>March quarter 1996 --</i>									
Establishments	53	38	91	51	12	63	30	15	45
Capacity									
On-site vans	216	618	834	145	159	304	77	87	164
Other powered sites	4,291	2,493	6,784	7,993	674	8,667	3,114	537	3,651
Unpowered sites	985	277	1,262	826	71	897	1,288	174	1,462
Cabins, flats, etc.	238	629	867	360	95	455	226	71	297
<i>Total capacity</i>	<i>5,730</i>	<i>4,017</i>	<i>9,747</i>	<i>9,324</i>	<i>999</i>	<i>10,323</i>	<i>4,705</i>	<i>869</i>	<i>5,574</i>
Sites occupied by long-term guests	324	2,468	2,792	136	433	569	33	124	157
Other sites permanently reserved	2,085	110	2,195	4,167	26	4,193	183	30	213
Employment (persons)	157	162	319	215	46	261	97	56	153
SITE NIGHTS OCCUPIED ('000)									
<i>March quarter 1995</i>	<i>301.3</i>	<i>250.0</i>	<i>551.3</i>	<i>535.5</i>	<i>49.5</i>	<i>585.0</i>	<i>113.9</i>	<i>25.5</i>	<i>139.4</i>
<i>1996—</i>									
January	127.6	91.5	219.1	224.2	17.9	242.1	59.4	10.7	70.1
February	86.5	86.4	172.9	154.8	15.9	170.7	21.3	6.8	28.2
March	91.0	93.3	184.3	161.2	17.0	178.1	25.8	7.7	33.5
<i>March quarter 1996</i>	<i>305.1</i>	<i>271.3</i>	<i>576.4</i>	<i>540.2</i>	<i>50.8</i>	<i>590.9</i>	<i>106.5</i>	<i>25.3</i>	<i>131.8</i>
SITE OCCUPANCY RATES (per cent)									
March quarter 1995	58.8	69.2	63.1	62.4	56.7	61.9	26.4	33.2	27.4
<i>1996 --</i>									
January	71.9	73.5	72.5	77.6	57.8	75.6	40.7	39.8	40.6
February	52.0	74.2	61.2	57.3	54.8	57.0	15.6	27.1	17.4
March	51.2	74.9	61.0	55.8	54.9	55.7	17.7	28.6	19.4
March quarter 1996	58.5	74.2	65.0	63.7	55.8	62.9	24.9	32.0	26.0
TAKINGS FROM ACCOMMODATION (\$'000)									
<i>March quarter 1995</i>	<i>2,055</i>	<i>2,878</i>	<i>4,933</i>	<i>3,370</i>	<i>528</i>	<i>3,897</i>	<i>1,912</i>	<i>330</i>	<i>2,243</i>
<i>1996—</i>									
January	1,105	1,025	2,130	2,086	201	2,287	1,072	182	1,254
February	535	1,004	1,538	822	157	979	377	99	476
March	569	1,090	1,659	842	174	1,016	473	113	586
<i>March quarter 1996</i>	<i>2,209</i>	<i>3,118</i>	<i>5,327</i>	<i>3,749</i>	<i>532</i>	<i>4,282</i>	<i>1,922</i>	<i>393</i>	<i>2,315</i>

TABLE 9—CARAVAN PARKS BY STATISTICAL DIVISION (a), VICTORIA—continued

Particulars	Central Highlands (SD)			Wimmera (SD)			Mallee (SD)		
	Short-term	Long-term	Total	Short-term	Long-term	Total	Short-term	Long-term	Total
ESTABLISHMENTS, CAPACITY AND EMPLOYMENT									
<i>March quarter 1995—</i>									
Establishments	16	8	24	22	5	27	28	19	47
Capacity									
On-site vans	95	66	161	94	18	112	221	193	414
Other powered sites	1,032	286	1,318	916	258	1,174	1,467	1,015	2,482
Unpowered sites	522	101	623	978	109	1,087	862	317	1,179
Cabins, flats, etc.	82	54	136	152	60	212	224	99	323
<i>Total capacity</i>	<i>1,731</i>	<i>507</i>	<i>2,238</i>	<i>2,140</i>	<i>445</i>	<i>2,585</i>	<i>2,774</i>	<i>1,624</i>	<i>4,398</i>
Sites occupied by long-term guests	103	106	209	32	54	86	102	335	437
Other sites permanently reserved	277	21	298	124	6	130	121	13	134
Employment (persons)	50	18	68	67	18	85	99	54	153
<i>March quarter 1996</i>									
Establishments	18	8	26	23	3	26	29	19	48
Capacity									
On-site vans	106	55	161	99	12	111	221	204	425
Other powered sites	1,203	370	1,573	861	212	1,073	1,817	1,001	2,818
Unpowered sites	752	180	932	961	91	1,052	956	246	1,202
Cabins, flats, etc.	106	75	181	126	41	167	225	110	335
<i>Total capacity</i>	<i>2,167</i>	<i>680</i>	<i>2,847</i>	<i>2,047</i>	<i>356</i>	<i>2,403</i>	<i>3,219</i>	<i>1,561</i>	<i>4,780</i>
Sites occupied by long-term guests	122	102	224	38	40	78	119	346	465
Other sites permanently reserved	318	15	333	45	5	50	306	26	332
Employment (persons)	60	22	82	58	12	70	100	57	157
SITE NIGHTS OCCUPIED ('000)									
<i>March quarter 1995</i>	<i>53.3</i>	<i>15.9</i>	<i>69.1</i>	<i>43.3</i>	<i>8.9</i>	<i>52.1</i>	<i>56.8</i>	<i>45.3</i>	<i>102.1</i>
<i>1996—</i>									
January	26.0	5.8	31.8	13.6	2.5	16.1	31.2	16.1	47.3
February	17.5	5.4	22.9	7.3	2.2	9.6	21.7	17.6	39.3
March	19.5	5.7	25.2	10.8	2.6	13.4	25.1	17.6	42.6
<i>March quarter 1996</i>	<i>63.0</i>	<i>16.8</i>	<i>79.8</i>	<i>31.7</i>	<i>7.3</i>	<i>39.0</i>	<i>78.0</i>	<i>51.3</i>	<i>129.2</i>
SITE OCCUPANCY RATES (per cent)									
<i>March quarter 1995</i>	<i>34.2</i>	<i>34.8</i>	<i>34.3</i>	<i>22.5</i>	<i>22.1</i>	<i>22.4</i>	<i>22.8</i>	<i>31.0</i>	<i>25.8</i>
<i>1996—</i>									
January	38.7	27.6	36.0	21.5	22.4	21.6	31.3	33.3	31.9
February	27.9	27.2	27.7	12.4	21.4	13.7	23.2	38.9	28.3
March	29.0	26.9	28.5	17.0	23.7	18.0	25.1	36.3	28.8
<i>March quarter 1996</i>	<i>31.9</i>	<i>27.2</i>	<i>30.8</i>	<i>17.0</i>	<i>22.5</i>	<i>17.8</i>	<i>26.6</i>	<i>36.1</i>	<i>29.7</i>
TAKINGS FROM ACCOMMODATION (\$'000)									
<i>March quarter 1995</i>	<i>532</i>	<i>175</i>	<i>707</i>	<i>783</i>	<i>117</i>	<i>901</i>	<i>806</i>	<i>545</i>	<i>1,351</i>
<i>1996—</i>									
January	375	82	456	253	31	285	438	223	661
February	180	77	256	132	26	158	230	197	427
March	227	80	308	219	34	253	273	193	467
<i>March quarter 1996</i>	<i>782</i>	<i>239</i>	<i>1,020</i>	<i>605</i>	<i>91</i>	<i>696</i>	<i>942</i>	<i>613</i>	<i>1,555</i>

TABLE 9 — CARAVAN PARKS BY STATISTICAL DIVISION (a), VICTORIA—continued

Particulars	Loddon (SD) (a)			Goulburn (SD) (a)			Ovens-Murray (SD)		
	Short-term	Long-term	Total	Short-term	Long-term	Total	Short-term	Long-term	Total
ESTABLISHMENTS, CAPACITY AND EMPLOYMENT									
<i>March quarter 1995</i>									
Establishments	32	14	46	44	23	67	40	8	48
Capacity									
On-site vans	159	151	310	206	258	464	234	73	307
Other powered sites	3,252	672	3,924	3,921	820	4,741	3,068	441	3,509
Unpowered sites	902	330	1,232	1,823	284	2,107	1,603	78	1,681
Cabins, flats, etc.	141	52	193	180	129	309	278	46	324
<i>Total capacity</i>	<i>4,454</i>	<i>1,205</i>	<i>5,659</i>	<i>6,130</i>	<i>1,491</i>	<i>7,621</i>	<i>5,183</i>	<i>638</i>	<i>5,821</i>
Sites occupied by long-term guests	249	332	581	244	452	696	120	172	292
Other sites permanently reserved	1,711	68	1,779	2,641	37	2,678	904	52	956
Employment (persons)	100	39	139	150	57	207	104	15	119
<i>March quarter 1996</i>									
Establishments	25	12	37	53	26	79	36	8	44
Capacity									
On-site vans	101	136	237	281	259	540	208	88	296
Other powered sites	2,368	553	2,921	5,049	938	5,987	2,599	359	2,958
Unpowered sites	672	313	985	2,115	357	2,472	1,418	85	1,503
Cabins, flats, etc.	109	58	167	246	163	409	256	54	310
<i>Total capacity</i>	<i>3,250</i>	<i>1,060</i>	<i>4,310</i>	<i>7,691</i>	<i>1,717</i>	<i>9,408</i>	<i>4,481</i>	<i>586</i>	<i>5,067</i>
Sites occupied by long-term guests	156	286	442	313	574	887	112	133	245
Other sites permanently reserved	1,307	51	1,358	3,030	71	3,101	850	26	876
Employment (persons)	88	31	119	188	61	249	89	20	109
SITE NIGHTS OCCUPIED ('000)									
<i>March quarter 1995</i>	<i>211.6</i>	<i>42.9</i>	<i>254.5</i>	<i>292.3</i>	<i>58.4</i>	<i>350.7</i>	<i>150.1</i>	<i>25.5</i>	<i>175.6</i>
<i>1996</i>									
January	60.0	12.7	72.7	130.8	25.6	156.3	61.2	6.6	67.8
February	47.4	11.2	58.6	110.0	24.5	134.4	34.6	6.0	40.6
March	53.3	13.3	66.5	119.0	24.8	143.8	40.0	7.0	47.0
<i>March quarter 1996</i>	<i>160.7</i>	<i>37.1</i>	<i>197.9</i>	<i>359.8</i>	<i>74.8</i>	<i>434.6</i>	<i>135.8</i>	<i>19.5</i>	<i>155.3</i>
SITE OCCUPANCY RATES (per cent)									
March quarter 1995	52.8	39.5	50.0	53.0	43.5	51.1	32.2	44.4	33.5
<i>1996</i>									
January	59.6	38.5	54.4	54.8	48.0	53.6	44.1	36.2	43.2
February	50.3	36.4	46.9	49.3	49.1	49.3	26.6	35.3	27.6
March	52.9	40.5	49.8	49.9	46.6	49.3	28.8	38.4	29.9
March quarter 1996	54.3	38.5	50.4	51.4	47.9	50.8	33.3	36.7	33.7
TAKINGS FROM ACCOMMODATION (\$'000)									
<i>March quarter 1995</i>	<i>1,212</i>	<i>385</i>	<i>1,598</i>	<i>1,574</i>	<i>614</i>	<i>2,188</i>	<i>1,380</i>	<i>230</i>	<i>1,610</i>
<i>1996</i>									
January	380	123	503	1,087	255	1,341	745	84	829
February	202	96	298	564	230	794	249	69	318
March	286	130	416	650	230	881	334	86	420
<i>March quarter 1996</i>	<i>868</i>	<i>349</i>	<i>1,217</i>	<i>2,301</i>	<i>715</i>	<i>3,016</i>	<i>1,327</i>	<i>239</i>	<i>1,566</i>

TABLE 9 — CARAVAN PARKS BY STATISTICAL DIVISION (a), VICTORIA—continued

Particulars	East Gippsland (SD) (a)			Gippsland (SD) (a)			Victoria		
	Short-term	Long-term	Total	Short-term	Long-term	Total	Short-term	Long-term	Total
ESTABLISHMENTS, CAPACITY AND EMPLOYMENT									
<i>March quarter 1995—</i>									
Establishments	67	7	74	50	16	66	435	164	599
Capacity									
On-site vans	377	42	419	196	147	343	2,018	1,895	3,913
Other powered sites	3,399	346	3,745	3,838	988	4,826	36,393	8,545	44,938
Unpowered sites	1,612	157	1,769	1,027	233	1,260	12,580	2,170	14,750
Cabins, flats, etc.	282	33	315	140	117	257	2,316	1,201	3,517
<i>Total capacity</i>	<i>5,670</i>	<i>578</i>	<i>6,248</i>	<i>5,201</i>	<i>1,485</i>	<i>6,686</i>	<i>53,307</i>	<i>13,811</i>	<i>67,118</i>
Sites occupied by long-term guests	268	94	362	95	392	487	1,717	4,800	6,517
Other sites permanently reserved	1,120	22	1,142	2,313	26	2,339	15,389	344	15,733
Employment (persons)	203	19	222	157	35	192	1,419	504	1,923
<i>March quarter 1996—</i>									
Establishments	78	7	85	42	13	55	438	161	599
Capacity									
On-site vans	453	61	514	160	129	289	2,067	1,808	3,875
Other powered sites	4,201	365	4,566	3,264	799	4,063	36,760	8,301	45,061
Unpowered sites	1,834	176	2,010	913	168	1,081	12,720	2,138	14,858
Cabins, flats, etc.	338	8	346	141	109	250	2,371	1,413	3,784
<i>Total capacity</i>	<i>6,826</i>	<i>610</i>	<i>7,436</i>	<i>4,478</i>	<i>1,205</i>	<i>5,683</i>	<i>53,918</i>	<i>13,660</i>	<i>67,578</i>
Sites occupied by long-term guests	289	88	377	87	341	428	1,729	4,935	6,664
Other sites permanently reserved	1,677	7	1,684	2,037	24	2,061	16,005	391	16,396
Employment (persons)	236	14	250	144	28	172	1,432	509	1,941
SITE NIGHTS OCCUPIED ('000)									
<i>March quarter 1995</i>	<i>210.4</i>	<i>14.2</i>	<i>224.6</i>	<i>276.7</i>	<i>41.3</i>	<i>318.0</i>	<i>2,245.2</i>	<i>577.3</i>	<i>2,822.5</i>
<i>1996—</i>									
January	113.6	3.8	117.5	101.5	12.9	114.3	949.2	206.0	1,155.2
February	77.0	3.4	80.4	70.5	11.7	82.2	648.6	191.1	839.7
March	80.6	3.6	84.2	76.9	13.2	90.1	703.0	205.8	908.8
<i>March quarter 1996</i>	<i>271.2</i>	<i>10.9</i>	<i>282.0</i>	<i>248.9</i>	<i>37.7</i>	<i>286.7</i>	<i>2,300.9</i>	<i>602.9</i>	<i>2,903.7</i>
SITE OCCUPANCY RATES (per cent)									
<i>March quarter 1995</i>	<i>41.2</i>	<i>27.3</i>	<i>39.9</i>	<i>59.1</i>	<i>30.9</i>	<i>52.9</i>	<i>46.8</i>	<i>46.4</i>	<i>46.7</i>
<i>1996—</i>									
January	53.7	20.3	51.0	73.1	34.4	64.9	56.8	48.6	55.1
February	38.9	19.2	37.3	54.3	33.5	49.9	41.5	48.2	42.8
March	38.1	19.3	36.5	55.4	35.2	51.1	42.1	48.6	43.4
<i>March quarter 1996</i>	<i>43.7</i>	<i>19.6</i>	<i>41.7</i>	<i>61.1</i>	<i>34.4</i>	<i>55.4</i>	<i>46.9</i>	<i>48.5</i>	<i>47.2</i>
TAKINGS FROM ACCOMMODATION (\$'000)									
<i>March quarter 1995</i>	<i>2,012</i>	<i>161</i>	<i>2,173</i>	<i>2,145</i>	<i>324</i>	<i>2,469</i>	<i>17,781</i>	<i>6,288</i>	<i>24,069</i>
<i>1996—</i>									
January	1,422	29	1,452	1,188	104	1,292	10,152	2,339	12,491
February	500	29	529	391	96	486	4,182	2,078	6,260
March	539	29	567	433	105	538	4,844	2,265	7,110
<i>March quarter 1996</i>	<i>2,461</i>	<i>87</i>	<i>2,548</i>	<i>2,011</i>	<i>305</i>	<i>2,317</i>	<i>19,178</i>	<i>6,682</i>	<i>25,860</i>

(a) Changed geographic boundaries effective from 1 July 1995 have affected the distribution of individual establishments among the various Statistical Divisions, including radical changes for Loddon, Goulburn, East Gippsland and Gippsland SDs respectively.

TABLE 10 — CARAVAN PARKS: STATISTICAL DIVISIONS AND SELECTED

Statistical Divisions and Selected Statistical Local Areas	Establish- ments	Capacity				Cabins, flats, etc.	Total	Sites occupied by long- term guests	Other sites perman- ently reserved	Employ- ment (persons)
		On-site vans	Other powered sites	Unpow- ered sites						
Frankston (C)	5	28	308	8	206	550	393	—	28	
Greater Dandenong (C)	4	73	166	15	101	355	197	—	16	
Hume (C)	4	113	273	24	71	481	218	—	20	
Kingston (C)	6	128	513	60	115	816	556	—	27	
Mornington Peninsula (S)										
South	38	105	3,558	515	95	4,273	195	1,904	98	
Remainder	8	63	432	291	18	804	168	129	25	
Wyndham (C)	3	6	175	20	42	243	153	9	9	
Yarra Ranges (S)										
Central	3	8	189	205	9	411	82	92	5	
Remainder	5	49	237	33	32	351	169	23	23	
Balance	15	261	933	91	178	1,463	661	38	68	
<i>Melbourne (SD)</i>	<i>91</i>	<i>834</i>	<i>6,784</i>	<i>1,262</i>	<i>867</i>	<i>9,747</i>	<i>2,792</i>	<i>2,195</i>	<i>319</i>	
Colac-Otway (S)										
South	10	36	505	334	66	941	12	239	33	
Remainder	3	25	95	18	3	141	29	4	8	
Greater Geelong (C) — Part A										
South Barwon	7	115	450	51	76	692	326	18	29	
Balance	4	41	407	—	66	514	133	215	19	
Greater Geelong (C) — Parts B and C	17	17	4,140	405	173	4,735	53	2,207	83	
Queenscliffe (B)	8	1	806	—	26	833	7	383	30	
Surf Coast (S)	14	69	2,264	89	45	2,467	9	1,127	59	
<i>Barwon (SD)</i>	<i>63</i>	<i>304</i>	<i>8,667</i>	<i>897</i>	<i>455</i>	<i>10,323</i>	<i>569</i>	<i>4,193</i>	<i>261</i>	
Corangamite (S)	7	10	259	126	31	426	6	89	19	
Glenelg (S)										
Portland	5	41	392	67	46	546	54	15	20	
Remainder	6	14	250	262	22	548	17	11	11	
Moyne (S)	11	30	1,106	785	49	1,970	6	87	26	
South Grampians (S)	9	28	213	100	14	355	15	4	15	
Warrnambool (C)	7	41	1,431	122	135	1,729	59	7	62	
<i>Western District (SD)</i>	<i>45</i>	<i>164</i>	<i>3,651</i>	<i>1,462</i>	<i>297</i>	<i>5,574</i>	<i>157</i>	<i>213</i>	<i>153</i>	
Ararat (RC)	5	35	289	205	44	573	23	95	22	
Ballarat (C)	8	81	633	370	90	1,174	113	80	42	
Hepburn (S)	5	17	335	187	17	556	34	84	7	
Moorabool (S)	5	11	202	74	29	316	45	32	7	
Pyrenees (S)	3	17	114	96	1	228	9	42	4	
<i>Central Highlands (SD)</i>	<i>26</i>	<i>161</i>	<i>1,573</i>	<i>932</i>	<i>181</i>	<i>2,847</i>	<i>224</i>	<i>333</i>	<i>82</i>	
Hindmarsh (S)	5	15	180	132	5	332	16	9	7	
Horsham (RC)	8	38	241	347	48	674	15	26	25	
North Grampians (S)	8	46	551	522	113	1,232	41	14	31	
Balance	5	12	101	51	1	165	6	1	7	
<i>Wimmera (SD)</i>	<i>26</i>	<i>111</i>	<i>1,073</i>	<i>1,052</i>	<i>167</i>	<i>2,403</i>	<i>78</i>	<i>50</i>	<i>70</i>	
Buloke (S)	5	8	125	158	10	301	15	1	7	
Gannawarra (S)	9	41	633	244	27	945	45	282	20	
Mildura (RC)										
Part A	18	252	1,162	343	197	1,954	328	28	80	
Part B	5	33	209	123	12	377	15	1	8	
Swan Hill (RC)										
Central	4	39	378	111	64	592	24	7	28	
Balance	7	52	311	223	25	611	38	13	14	
<i>Mallee (SD)</i>	<i>48</i>	<i>425</i>	<i>2,818</i>	<i>1,202</i>	<i>335</i>	<i>4,780</i>	<i>465</i>	<i>332</i>	<i>157</i>	

STATISTICAL LOCAL AREAS, VICTORIA, MARCH QUARTER 1996

<i>Site nights occupied</i>				<i>Site occupancy rates (per cent)</i>				<i>Takings from accommodation (\$'000)</i>			
<i>Jan.</i>	<i>Feb.</i>	<i>Mar.</i>	<i>Mar. qtr</i>	<i>Jan.</i>	<i>Feb.</i>	<i>Mar.</i>	<i>Mar. qtr</i>	<i>Jan.</i>	<i>Feb.</i>	<i>Mar.</i>	<i>Mar. qtr</i>
13,668	12,755	13,669	40,092	80.2	80.0	80.2	80.1	174	174	198	546
7,851	7,435	8,375	23,661	71.3	72.2	76.1	73.2	120	117	132	369
9,793	9,478	10,250	29,521	65.7	67.9	68.7	67.4	119	117	142	378
19,669	18,451	19,965	58,085	77.8	78.0	78.9	78.2	220	217	231	668
99,852	68,553	70,607	239,012	75.4	55.3	53.3	61.5	685	294	277	1,256
16,559	9,413	10,201	36,173	66.4	40.4	40.9	49.4	161	79	82	322
5,221	4,859	5,306	15,386	69.3	69.0	70.4	69.6	46	40	46	132
7,085	5,922	6,910	19,917	55.6	49.7	54.2	53.3	49	37	39	125
7,345	6,363	7,165	20,873	67.5	62.5	65.8	65.3	103	75	93	271
32,074	29,707	31,894	93,675	70.7	70.0	70.3	70.4	455	388	419	1,261
219,117	172,936	184,342	576,395	72.5	61.2	61.0	65.0	2,130	1,538	1,659	5,327
21,266	10,683	12,922	44,871	72.9	39.1	44.3	52.4	251	108	120	479
1,358	1,447	1,390	4,195	31.1	35.4	31.8	32.7	16	12	13	40
13,267	11,863	12,720	37,850	61.8	59.1	59.3	60.1	155	120	133	409
12,660	11,222	11,674	35,556	79.5	75.3	73.3	76.0	84	51	54	190
107,822	78,736	79,401	265,959	73.5	57.3	54.1	61.7	844	320	318	1,481
21,485	15,627	16,332	53,444	83.2	64.7	63.2	70.5	183	131	120	434
64,217	41,117	43,702	149,036	84.0	57.5	57.1	66.4	755	237	257	1,249
242,075	170,695	178,141	590,911	75.6	57.0	55.7	62.9	2,287	979	1,016	4,282
7,390	5,121	4,868	17,379	56.0	41.5	36.9	44.8	76	38	37	150
5,032	3,462	4,059	12,553	29.7	21.9	24.0	25.3	79	46	47	172
3,909	1,557	1,859	7,325	23.0	9.8	10.9	14.7	63	24	31	118
19,432	6,962	11,650	38,044	31.8	12.2	19.1	21.2	275	107	207	590
1,831	1,279	1,376	4,486	16.6	12.4	12.5	13.9	32	22	21	75
32,554	9,781	9,681	52,016	60.7	19.5	18.1	33.1	729	239	242	1,210
70,148	28,162	33,493	131,803	40.6	17.4	19.4	26.0	1,254	476	586	2,315
7,974	4,677	5,098	17,749	44.9	28.1	28.7	34.0	182	66	77	325
13,620	9,643	10,509	33,772	37.4	28.3	28.9	31.6	195	139	170	504
4,954	4,192	4,514	13,660	28.7	26.0	26.2	27.0	36	23	26	85
3,200	2,680	3,010	8,890	32.7	29.2	30.7	30.9	33	23	27	83
2,034	1,701	2,040	5,775	28.8	25.7	28.9	27.8	9	6	8	24
31,782	22,893	25,171	79,846	36.0	27.7	28.5	30.8	456	256	308	1,020
996	893	1,073	2,962	9.7	9.3	10.4	9.8	8	7	9	23
3,549	2,367	3,553	9,469	17.0	12.1	17.0	15.4	59	35	58	151
11,096	5,944	8,350	25,390	29.1	16.6	21.9	22.6	215	114	184	512
453	349	409	1,211	8.9	7.3	8.0	8.1	3	3	3	9
16,094	9,553	13,385	39,032	21.6	13.7	18.0	17.8	285	158	253	696
989	539	1,141	2,669	10.6	6.2	12.2	9.7	7	3	8	18
12,117	10,227	10,914	33,258	41.4	37.3	37.3	38.7	85	32	38	155
22,964	22,311	22,610	67,885	37.9	39.4	37.3	38.2	402	306	307	1,014
1,763	760	820	3,343	15.1	7.0	7.0	9.7	20	7	9	36
5,452	3,083	4,192	12,727	29.7	18.0	22.8	23.6	98	53	68	219
4,049	2,354	2,962	9,365	21.4	13.3	15.6	16.8	49	26	37	112
47,334	39,274	42,639	129,247	31.9	28.3	28.8	29.7	661	427	467	1,555

TABLE 10—CARAVAN PARKS: STATISTICAL DIVISIONS AND SELECTED

Statistical Divisions and Selected Statistical Local Areas	Establishments	Capacity				Cubins, flats, etc.	Total	Sites occupied by long-term guests	Other sites permanently reserved	Employment (persons)
		On-site vans	Other powered sites	Unpowered sites						
Central Goldfields (S)	3	16	167	34	10	227	57	23	8	
Greater Bendigo (C)—Part A										
Marong—Inner	5	54	205	103	33	395	80	31	14	
Remainder	6	80	644	264	59	1,047	152	247	29	
Greater Bendigo (C)—Part B	6	16	835	144	7	1,002	17	648	21	
Loddon (S)	8	24	473	154	27	678	53	174	22	
Macedon Ranges (S)	3	28	155	119	8	310	58	6	6	
Mount Alexander (S)	6	19	442	167	23	651	25	229	19	
<i>Loddon (SD)</i>	<i>37</i>	<i>237</i>	<i>2,921</i>	<i>985</i>	<i>167</i>	<i>4,310</i>	<i>442</i>	<i>1,358</i>	<i>119</i>	
Campaspe (S)										
Echuca	5	62	586	117	43	808	99	214	23	
Kyabram	3	40	78	25	14	157	55	14	6	
Remainder	5	28	291	148	7	474	40	161	9	
Delatite (S)	11	82	990	170	64	1,306	47	680	50	
Greater Shepparton (C)										
Part A	9	124	549	218	81	972	227	89	21	
Part B East and West	6	40	202	55	25	322	117	51	13	
Mitchell (S)	4	26	148	81	35	290	61	6	8	
Moirra (S)	18	57	1,374	865	73	2,369	145	575	50	
Murrindindi (S)	14	65	1,135	655	52	1,907	50	782	56	
Strathbogie (S)	4	16	634	138	15	803	46	529	13	
<i>Goulburn (SD)</i>	<i>79</i>	<i>540</i>	<i>5,987</i>	<i>2,472</i>	<i>409</i>	<i>9,408</i>	<i>887</i>	<i>3,101</i>	<i>249</i>	
Alpine (S)	17	90	1,484	630	176	2,380	35	520	46	
Indigo (S)	6	32	241	158	19	450	29	71	12	
Milawa (S)										
North	4	43	148	59	31	281	31	30	12	
Remainder	6	54	291	182	31	558	41	22	10	
Towong (S)	7	29	415	327	29	800	9	84	17	
Wodonga (RC)	4	48	379	147	24	598	100	149	12	
<i>Ovens-Murray (SD)</i>	<i>44</i>	<i>296</i>	<i>2,958</i>	<i>1,503</i>	<i>310</i>	<i>5,067</i>	<i>245</i>	<i>876</i>	<i>109</i>	
East Gippsland (S)										
Bairnsdale	36	214	1,862	461	246	2,783	230	767	112	
Orbost	12	90	748	664	31	1,533	21	111	28	
Remainder	14	59	465	240	26	790	40	41	50	
Wellington (S)										
Alberton	8	76	401	143	20	640	18	267	20	
Maffra	6	11	406	238	6	661	16	270	17	
Rosedale	5	41	566	181	13	801	42	218	13	
Remainder	4	23	118	83	4	228	10	10	10	
<i>East Gippsland (SD)</i>	<i>85</i>	<i>514</i>	<i>4,566</i>	<i>2,010</i>	<i>346</i>	<i>7,436</i>	<i>377</i>	<i>1,684</i>	<i>250</i>	
Bass Coast (S)										
Phillip Island	13	91	1,226	97	56	1,470	11	742	68	
Balance	14	53	1,276	244	11	1,584	59	817	34	
Baw Baw (S)	8	47	391	213	39	690	104	122	16	
La Trobe (S)	6	67	551	20	73	711	224	11	14	
South Gippsland (S)										
East	9	22	374	411	40	847	15	314	22	
Remainder	5	9	245	96	31	381	15	55	18	
<i>Gippsland (SD)</i>	<i>55</i>	<i>289</i>	<i>4,063</i>	<i>1,081</i>	<i>250</i>	<i>5,683</i>	<i>428</i>	<i>2,061</i>	<i>172</i>	
Victoria										
Short-term parks	438	2,067	36,760	12,720	2,371	53,918	1,729	16,005	1,432	
Long-term parks	161	1,808	8,301	2,138	1,413	13,660	4,935	391	509	
<i>Total</i>	<i>599</i>	<i>3,875</i>	<i>45,061</i>	<i>14,858</i>	<i>3,784</i>	<i>67,578</i>	<i>6,664</i>	<i>16,396</i>	<i>1,941</i>	

STATISTICAL LOCAL AREAS, VICTORIA, MARCH QUARTER 1996 - continued

<i>Site nights occupied</i>				<i>Site occupancy rates (per cent)</i>				<i>Takings from accommodation (\$'000)</i>			
<i>Jan.</i>	<i>Feb.</i>	<i>Mar.</i>	<i>Mar. qtr</i>	<i>Jan.</i>	<i>Feb.</i>	<i>Mar.</i>	<i>Mar. qtr</i>	<i>Jan.</i>	<i>Feb.</i>	<i>Mar.</i>	<i>Mar. qtr</i>
3,723	3,143	3,520	10,386	52.9	47.7	50.0	50.3	31	25	33	89
4,565	3,635	4,865	13,065	37.3	31.7	39.7	36.3	59	36	57	152
16,078	13,466	16,090	45,634	49.5	44.4	49.6	47.9	158	105	159	422
22,802	20,193	21,931	64,926	73.4	69.5	70.6	71.2	98	46	50	194
12,593	7,741	8,508	28,842	59.9	39.4	40.5	46.7	59	31	38	128
2,258	2,150	2,258	6,666	23.5	23.9	23.5	23.6	14	14	14	42
10,686	8,281	9,373	28,340	53.0	43.9	46.4	47.8	84	43	64	191
<i>72,705</i>	<i>58,609</i>	<i>66,545</i>	<i>197,859</i>	<i>54.4</i>	<i>46.9</i>	<i>49.8</i>	<i>50.4</i>	<i>503</i>	<i>298</i>	<i>416</i>	<i>1,217</i>
15,507	12,599	13,759	41,865	61.9	53.8	54.9	56.9	207	130	136	473
2,867	2,776	2,794	8,437	58.9	61.0	57.4	59.1	22	20	22	64
7,011	6,419	6,809	20,239	47.7	46.7	46.3	46.9	22	19	35	75
26,208	21,986	24,211	72,405	64.7	58.1	59.8	60.9	237	106	139	481
13,991	13,668	12,802	40,461	46.4	48.5	42.5	45.7	148	136	128	413
6,101	5,671	5,922	17,694	61.1	60.7	59.3	60.4	45	40	41	126
3,030	2,766	3,061	8,857	33.7	32.9	34.0	33.6	27	27	29	83
31,820	24,098	26,136	82,054	43.3	35.1	35.6	38.1	292	141	156	589
30,661	26,482	29,268	86,411	51.9	47.9	49.5	49.8	224	115	144	483
19,139	17,952	19,080	56,171	76.9	77.1	76.6	76.9	117	60	50	227
<i>156,335</i>	<i>134,417</i>	<i>143,842</i>	<i>434,594</i>	<i>53.6</i>	<i>49.3</i>	<i>49.3</i>	<i>50.8</i>	<i>1,341</i>	<i>794</i>	<i>881</i>	<i>3,016</i>
36,228	18,656	22,476	77,360	49.1	27.0	30.5	35.7	508	143	209	860
5,494	3,560	4,717	13,771	39.4	27.3	33.8	33.6	58	27	43	129
3,141	2,771	2,868	8,780	36.1	34.0	32.9	34.3	30	21	23	75
3,589	3,056	3,350	9,995	20.7	18.9	19.4	19.7	52	37	41	131
7,297	3,868	4,555	15,720	29.4	16.7	18.4	21.6	92	31	38	161
12,061	8,645	9,013	29,719	65.1	49.9	48.6	54.6	89	58	65	211
<i>67,810</i>	<i>40,556</i>	<i>46,979</i>	<i>155,345</i>	<i>43.2</i>	<i>27.6</i>	<i>29.9</i>	<i>33.7</i>	<i>829</i>	<i>318</i>	<i>420</i>	<i>1,566</i>
53,691	38,264	41,076	133,031	62.2	47.4	47.6	52.5	840	307	338	1,485
21,332	9,922	8,880	40,134	44.9	22.3	18.7	28.8	265	92	78	435
7,833	3,826	4,137	15,796	32.0	16.7	16.9	22.0	74	30	32	136
11,440	10,433	11,080	32,953	57.7	56.2	55.8	56.6	110	45	55	210
11,358	8,440	9,138	28,936	55.4	44.0	44.6	48.1	83	14	17	113
10,506	8,616	8,800	27,922	42.3	37.1	35.4	38.3	61	32	33	126
1,295	872	1,102	3,269	18.3	13.2	15.6	15.8	19	9	15	43
<i>117,455</i>	<i>80,373</i>	<i>84,213</i>	<i>282,041</i>	<i>51.0</i>	<i>37.3</i>	<i>36.5</i>	<i>41.7</i>	<i>1,452</i>	<i>529</i>	<i>567</i>	<i>2,548</i>
37,405	27,002	28,198	92,605	82.1	63.3	61.9	69.2	587	174	202	963
37,829	26,599	28,833	93,261	77.0	57.9	58.7	64.7	346	121	116	583
8,484	6,950	7,895	23,329	39.7	34.7	36.9	37.2	57	42	49	149
8,053	7,629	8,648	24,330	36.5	37.0	39.2	37.6	63	62	68	192
16,266	10,781	11,920	38,967	61.9	43.9	45.4	50.6	130	54	66	250
6,298	3,279	4,585	14,162	53.3	29.7	38.8	40.8	109	32	38	180
<i>114,335</i>	<i>82,240</i>	<i>90,079</i>	<i>286,654</i>	<i>64.9</i>	<i>49.9</i>	<i>51.1</i>	<i>55.4</i>	<i>1,292</i>	<i>486</i>	<i>538</i>	<i>2,317</i>
949,208	648,608	703,044	2,300,860	56.8	41.5	42.1	46.9	10,152	4,182	4,844	19,178
205,982	191,100	205,785	602,867	48.6	48.2	48.6	48.5	2,339	2,078	2,265	6,682
<i>1,155,190</i>	<i>839,708</i>	<i>908,829</i>	<i>2,903,727</i>	<i>55.1</i>	<i>42.8</i>	<i>43.4</i>	<i>47.2</i>	<i>12,491</i>	<i>6,260</i>	<i>7,110</i>	<i>25,860</i>

TABLE 11 — VISITOR HOSTELS BY STATISTICAL DIVISION, VICTORIA

Particulars	Melbourne (SD)	Goulburn (SD)	Wimmera and Ovens-Murray (SDs)	Balance of State	Total Victoria
ESTABLISHMENTS, CAPACITY AND EMPLOYMENT					
<i>March quarter 1995—</i>					
Establishments	16	7	12	21	56
Bed spaces	1,305	230	737	771	3,043
Employment (persons)	70	9	37	54	170
<i>March quarter 1996—</i>					
Establishments	15	8	14	18	55
Bed spaces	1,260	245	820	1,033	3,358
Employment (persons)	80	11	40	65	196
GUEST NIGHTS					
<i>March quarter 1995</i>	87,815	1,820	13,576	26,214	129,425
<i>1996—</i>					
January	31,201	567	3,794	9,408	44,970
February	29,408	381	4,048	10,092	43,929
March	29,255	660	6,577	12,517	49,009
<i>March quarter 1996</i>	89,864	1,608	14,419	32,017	137,908
BED OCCUPANCY RATES (per cent)					
<i>March quarter 1995</i>	74.8	8.8	20.5	37.8	47.3
<i>1996—</i>					
January	79.9	7.5	14.9	29.4	43.2
February	80.5	5.4	17.0	33.7	45.1
March	74.9	8.7	25.9	39.1	47.1
<i>March quarter 1996</i>	78.4	7.2	19.3	34.1	45.1
GUEST ARRIVALS					
<i>March quarter 1995</i>	35,623	989	4,433	11,980	53,025
<i>1996—</i>					
January	10,055	298	1,419	4,355	16,127
February	9,629	290	1,727	4,373	16,019
March	9,484	294	2,291	5,051	17,120
<i>March quarter 1996</i>	29,168	882	5,437	13,779	49,266
AVERAGE LENGTH OF STAY (days)					
<i>March quarter 1995</i>	2.5	1.8	3.1	2.2	2.4
<i>1996—</i>					
January	3.1	1.9	2.7	2.2	2.8
February	3.1	1.3	2.3	2.3	2.7
March	3.1	2.2	2.9	2.5	2.9
<i>March quarter 1996</i>	3.1	1.8	2.7	2.3	2.8
TAKINGS FROM ACCOMMODATION (\$'000)					
<i>March quarter 1995</i>	1,199	29	179	284	1,691
<i>1996—</i>					
January	456	8	57	129	649
February	462	5	58	131	656
March	438	8	85	167	698
<i>March quarter 1996</i>	1,356	21	200	427	2,004

EXPLANATORY NOTES

INTRODUCTION

1 This publication contains data for Victoria from a quarterly survey of tourist accommodation establishments.

SCOPE

2 Tourist accommodation establishments currently included in the survey comprise two groups:

- Establishments which provide predominantly short-term accommodation (i.e. for periods of less than 2 months) to the general public. These include:
 - *Hotels, motels and guest houses, with facilities* being hotels licensed to operate a public bar and motels, private hotels and guest houses all of which provide a bath (or shower) and toilet in most guest rooms and have breakfast available for guests. NOTE: From December quarter 1993, hotel, motel and guest house establishments with fewer than five rooms have been formally excluded from the scope of this statistical collection.
 - *Holiday flats, units and houses* (excluding establishments predominantly operated on a time share basis) which are operated by owners, managers or real estate agents who have sole letting rights to at least five flats, units or houses for short-term letting. They are mainly self-contained in terms of cooking, bath (or shower) and toilet facilities and do not have breakfast available for guests. Data for holiday flats, units and houses include short-term owner occupation as well as paying guest occupation.
 - *Visitor hostels* which provide accommodation to visitors on a bed basis (rather than by the room). This category does not include establishments providing charity type accommodation (e.g. Salvation Army hostels) nor hotels, motels and guest houses without in-room facilities which provide accommodation on a per room basis.
 - *Caravan parks* which provide either predominantly short-term (i.e. for periods of less than 2 months) or predominantly long-term (i.e. for periods of 2 months or more) accommodation to the general public and which provide powered sites for caravans and toilet, shower and laundry facilities for guests.

3 Data collected and published for each type of establishment (other than holiday flats, units and houses) include both long-term and short-term guests at these establishments.

4 Establishments which provide more than one type of accommodation (e.g. a motel with attached caravan park) are treated as two or more separate establishments. However, self-contained units, flats, cabins, etc. attached to hotels, motels or to caravan parks are included in the capacity for those establishments and not treated as separate holiday flat, unit or house establishments.

AUSTRALIAN STANDARD GEOGRAPHICAL CLASSIFICATION

5 Statistics presented in this publication have been classified according to the Australian Standard Geographic Classification (ASGC), Edition 2.5. This classification incorporates a number of hierarchic structures of geographic areas. The appropriate spatial units of the main structure of the ASGC used in this publication are defined as follows.

EXPLANATORY NOTES

AUSTRALIAN STANDARD
GEOGRAPHICAL CLASSIFICATION
continued

STATISTICAL LOCAL AREAS (SLAs) are in most cases either identical with, or have been aggregated to, the previously published whole or part legal Local Government Areas (LGAs) comprising boroughs (B), cities (C), rural cities (RC) and shires (S). In aggregate, SLAs cover the whole of the State without gaps or overlaps. In some cases, legal LGAs overlap Statistical Division or Subdivision boundaries and therefore comprise two SLAs (e.g. Part A and Part B).

STATISTICAL SUBDIVISIONS (SSDs) consist of one or more SLAs and form the intermediate size spatial unit for the presentation of regional data.

STATISTICAL DIVISIONS (SDs) consist of one or more SSDs. Where SSDs are not shown for statistical purposes, statistical local areas are shown ordered alphabetically within statistical divisions. The divisions are designed to be relatively homogeneous regions characterised by identifiable social and economic units within the region, under the unifying influence of one or more major towns or cities.

NOTE: As from 1 July 1995, extensive changes have been made to Local Government Areas (LGAs) in Victoria. The extent of the changes has meant that most LGAs have names unrelated to the previously existing LGAs. For more details, refer to the Information Paper *Victorian Local Government Amalgamations 1994-95: Changes to the Australian Standard Geographic Classification* (1257.0). Further information is available in the *Australian Standard Geographic Classification, Edition 2.5* (1216.0).

UNPUBLISHED STATISTICS

6 The ABS may make available on request certain unpublished tourist accommodation statistics. A charge may be made for this information.

RELATED PUBLICATIONS

7 Publications for Australia, and each State and Territory, are released by the respective offices of the ABS. Tourist accommodation statistics for past quarters are available on request. Other ABS publications which may be of interest include:

- *Directory of Tourism Statistics* (1130.0) (irregular: first and latest issue; 1991)
- *Overseas Arrivals and Departures, Australia* (3401.0) (monthly)
- *Tourism Indicators, Australia* (8634.0) (quarterly)
- *Tourist Accommodation, Australia* (8635.0) (quarterly)

8 Current publications produced by the ABS are listed in the *Catalogue of Publications and Products* (1101.0). The ABS also issues the *Release Advice* (1105.0) on Tuesdays and Fridays which lists publications to be released in the next few days. Both the *Catalogue* and *Release Advice* are available from any ABS office.

SYMBOLS AND OTHER USAGES

- n.a. not available
- n.p. not available for publication but included in totals where applicable
- r revised
- .. not applicable
- nil or rounded to zero
- (B) Borough
- (C) City
- (RC) Rural City
- (S) Shire

9 Where figures have been rounded, discrepancies may occur between totals and the sums of the component items.

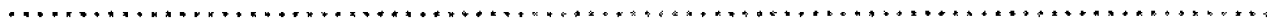
GLOSSARY



- Average length of stay** Average length of stay is expressed in numbers of days and calculated:
- for hotels, motels and guest houses, by dividing *Guest nights* by *Guest arrivals* and
 - for holiday flats, units and houses, by dividing *Unit nights occupied* by *Unit lettings*.
- Bed spaces** Three-quarter beds are counted as one bed space; double beds as two bed spaces. Cots are excluded.
- Capacity** Capacity in terms of *Guest rooms*, *Bed spaces*, *Holiday units* or *Caravan park sites*, etc. is the maximum number available to accommodate paying guests during the survey period. Capacity closed temporarily for seasonal reasons is included.
- Caravan park capacity** The total number of *On-site vans*, *Other powered sites*, *Unpowered sites* and *Cabins*, etc.
- Employment** The number of persons working at accommodation establishments at the end of the survey period (including working proprietors and those working on other than accommodation activities).
- Establishments** For hotels, motels and guest houses, caravan parks and visitor hostels, the number of establishments within the scope of the survey which operated for any part of the survey period, or which closed temporarily for the quarter for seasonal reasons.
- Guest arrivals** The total number of paying guests counted only on the first night they stayed at the accommodation establishment.
- Letting entities** For holiday flats, units and houses, the number of owners, managers or real estate agents within the scope of the survey who operated for any part of the survey period.
- Occupancy** Occupancy in terms of *Room nights*, *Unit nights* or *Site nights occupied* refers to the total number of nights each guest room, holiday unit or caravan park site, etc. was occupied during the survey period. NOTE: From September quarter 1988, caravan park sites, etc. permanently reserved for 2 months or more at the end of the survey period but only casually occupied by their tenants have been recorded continuously as *Site nights occupied* irrespective of whether the tenants of individual sites were in residence on any particular night.
- Occupancy in terms of *Guest nights* refers to the total number of nights each paying guest stayed during the survey period.
- Occupancy rates** *Occupancy rates* represent occupancy expressed as a percentage of total capacity available during the survey period, e.g.

$$\text{Room occupancy rate (\%)} \text{ for the period} = \frac{\text{Room nights occupied}}{(\text{Guest rooms}) \times (\text{No. of days in the period})} \times 100$$

providing that, for establishments closing (other than for seasonal reasons) or opening during the survey period, the denominator of the above expression includes only operating periods.



GLOSSARY

- Other sites permanently reserved** The total number of powered and unpowered sites, on-site vans and cabins, etc. continuously let for 2 months or more by the end of the survey period to tenants who occupy the sites only on a casual or sporadic basis. Separate data for this item are available only from September quarter 1992.
- Room nights available** The number of guest rooms available multiplied by the number of days for which they were available during the survey period. Including operating periods only for establishments closing (other than for seasonal reasons) or opening during the survey period.
- Sites occupied by long-term guests** The total number of sites, etc. occupied at the end of the survey period by guests who have stayed continuously for 2 months or more.
- Star grading** The grading of hotels and motels with facilities based on the classification system used by members of the Australian Automobile Association (AAA). The gradings are allocated according to a points system based on the amenities and facilities available to guests. Details of the grading scheme are contained in the RACV-RAASA members' publication *Accommodation Australia*, or the individual tour guides produced by members of the AAA. For the purpose of classifying establishments to a star grading in this publication, 'half' star gradings are ignored (e.g. a two and a half star grading has been shown as two star).
- Takings from accommodation** Revenue received from the provision of accommodation. Takings from meals are excluded. Takings from accommodation for each month generally represent the takings received during that month. Where payments are received in advance of, or after, the provision of accommodation to guests, the monthly figure for takings from accommodation may not necessarily bear a direct relationship to the number of guests accommodated during the month. Rental and storage fees paid to caravan parks for the keeping of private vans in parks are included in the takings of the month they are received.
- Unit lettings** The total number of times a holiday flat, unit or house was occupied by a new tenant, counted only on the first night it was occupied by the new tenant.

STATISTICAL DIVISIONS AND STATISTICAL LOCAL AREAS

VICTORIA (Effective 1 July 1995)

Melbourne (SD)

0661 Banyule (C) — Heidelberg
 0662 Banyule (C) — North
 0911 Bayside (C) — Brighton
 0912 Bayside (C) — South
 1111 Boroondara (C) — Camberwell North
 1112 Boroondara (C) — Camberwell South
 1113 Boroondara (C) — Hawthorn
 1114 Boroondara (C) — Kew
 1181 Brimbank (C) — Keilor
 1182 Brimbank (C) — Sunshine
 1451 Cardinia (S) — Pakenham
 1454 Cardinia (S) — South
 1611 Casey (C) — Berwick
 1614 Casey (C) — South
 1891 Darebin (C) — Northcote
 1892 Darebin (C) — Preston
 2171 Frankston (C) — East
 2174 Frankston (C) — West
 2311 Glen Eira (C) — Caulfield
 2314 Glen Eira (C) — South
 2671 Greater Dandenong (C) —
 Dandenong
 2674 Greater Dandenong (C) Balance
 3111 Hobsons Bay (C) — Altona
 3112 Hobsons Bay (C) — Williamstown
 3271 Hume (C) — Broadmeadows
 3274 Hume (C) — Craigieburn
 3275 Hume (C) — Sunbury
 3431 Kingston (C) — North
 3434 Kingston (C) — South
 3670 Knox (C)
 4210 Manningham (C)
 4330 Maribyrnong (C)
 4411 Maroondah (C) — Croydon
 4412 Maroondah (C) — Ringwood
 4601 Melbourne (C) — Inner
 4602 Melbourne (C) — Remainder
 4651 Melton (S) — East
 4654 Melton (S) Balance
 4971 Monash (C) — South-West
 4974 Monash (C) — Waverley East
 4975 Monash (C) — Waverley West
 5061 Moonee Valley (C) — Essendon
 5062 Moonee Valley (C) — West
 5251 Moreland (C) — Brunswick
 5252 Moreland (C) — Coburg
 5253 Moreland (C) — North
 5341 Mornington P'sula (S) — East
 5344 Mornington P'sula (S) — South
 5345 Mornington P'sula (S) — West
 5711 Nillumbik (S) — South-West
 5714 Nillumbik (S) Balance
 5901 Port Phillip (C) — St Kilda
 5902 Port Phillip (C) — West
 6351 Stonnington (C) — Prahran
 6352 Stonnington (C) — Malvern
 6981 Whitehorse (C) — Box Hill
 6984 Whitehorse (C) — Nunawading East
 6985 Whitehorse (C) — Nunawading West
 7070 Whittlesea (C)
 7260 Wyndham (C)
 7351 Yarra (C) — North
 7352 Yarra (C) — Richmond
 7451 Yarra Ranges (S) — Central
 7454 Yarra Ranges (S) — North
 7455 Yarra Ranges (S) — South-West

Barwon (SD)

1751 Colac-Otway (S) — Colac
 1754 Colac-Otway (S) — North
 1755 Colac-Otway (S) — South
 2491 Golden Plains (S) — North-West
 2492 Golden Plains (S) — South-East
 2751 Bellarine — Inner
 2752 Corio — Inner
 2753 Geelong
 2754 Geelong West
 2755 Newtown
 2756 South Barwon — Inner
 2757 Greater Geelong (C) — Part B
 2758 Greater Geelong (C) — Part C
 6080 Queenscliffe (B)
 6491 Surf Coast (S) — East
 6492 Surf Coast (S) — West

Western District (SD)

1831 Corangamite (S) — North
 1832 Corangamite (S) — South
 2411 Glenelg (S) — Heywood
 2412 Glenelg (S) — North
 2413 Glenelg (S) — Portland
 5491 Moyne (S) — North-East
 5494 Moyne (S) — South-West
 5495 Moyne (S) Balance
 6261 South Grampians (S) — Hamilton
 6264 South Grampians (S) — Wannon
 6265 South Grampians (S) Balance
 6730 Warrnambool (C)
 8469 Lady Julia Percy Island

Central Highlands (SD)

0260 Ararat (RC)
 0571 Ballarat (C) — Central
 0572 Ballarat (C) — Inner North
 0573 Ballarat (C) — North
 0574 Ballarat (C) — South
 2911 Hepburn (S) — East
 2912 Hepburn (S) — West
 5151 Moorabool (S) — Bacchus Marsh
 5154 Moorabool (S) — Ballan
 5155 Moorabool (S) — West
 5990 Pyrenees (S)

Wimmera (SD)

2980 Hindmarsh (S)
 3191 Horsham (RC) — Central
 3194 Horsham (RC) Balance
 5811 North Grampians (S) — St Arnaud
 5814 North Grampians (S) — Stawell
 6890 West Wimmera (S)
 7631 Yarriambiack (S) — North
 7632 Yarriambiack (S) — South

Mallee (SD)

1271 Buloke (S) — North
 1272 Buloke (S) — South
 2250 Gannawarra (S)
 4781 Mildura (RC) — Part A
 4782 Mildura (RC) — Part B
 6611 Swan Hill (RC) — Central
 6612 Swan Hill (RC) Balance

STATISTICAL DIVISIONS AND STATISTICAL LOCAL AREAS

VICTORIA (Effective 1 July 1995)

Loddon (SD)

1671	Central Goldfields (S)—Mariborough
1674	Central Goldfields (S) Balance
2611	Eaglehawk
2612	Greater Bendigo (C)—Central
2613	Huntly—Inner
2614	Marong—Inner
2615	Strathfieldsaye—Inner
2618	Greater Bendigo (C)—Part B
3941	Loddon (S)—North
3942	Loddon (S)—South
4131	Macedon Ranges (S)—Kyneton
4134	Macedon Ranges (S)—Romsey
4135	Macedon Ranges (S) Balance
5431	Mount Alexander (S)—Castlemaine
5434	Mount Alexander (S) Balance

Goulburn (SD)

1371	Campaspe (S) — Echuca
1374	Campaspe (S) — Kyabram
1375	Campaspe (S) — Rochester
1376	Campaspe (S) — South
1951	Delatite (S) — Benalla
1954	Delatite (S) — North
1955	Delatite (S) — South
2831	Greater Shepparton (C) — Part A
2834	Greater Shepparton (C) — Part B East
2835	Greater Shepparton (C) — Part B West
4851	Mitchell (S) — North
4854	Mitchell (S) — South
4900	Moira (S)
5621	Murrindindi (S) — East
5622	Murrindindi (S) — West
6430	Strathbogie (S)

Ovens—Murray (SD)

0111	Alpine (S) — East
0112	Alpine (S) — West
3351	Indigo (S) — Part A
3352	Indigo (S) — Part B
4711	Milawa (S) — North
4714	Milawa (S) — South
4715	Milawa (S) — Wangaratta
6671	Towong (S) — Part A
6672	Towong (S) — Part B
7170	Wodonga (RC)

East Gippsland (SD)

2111	East Gippsland (S) — Bairnsdale
2114	East Gippsland (S) — Orbost
2115	East Gippsland (S) — South-West
2118	East Gippsland (S) Balance
6811	Wellington (S) — Alberton
6812	Wellington (S) — Avon
6813	Wellington (S) — Maffra
6814	Wellington (S) — Rosedale
6815	Wellington (S) — Sale

Gippsland (SD)

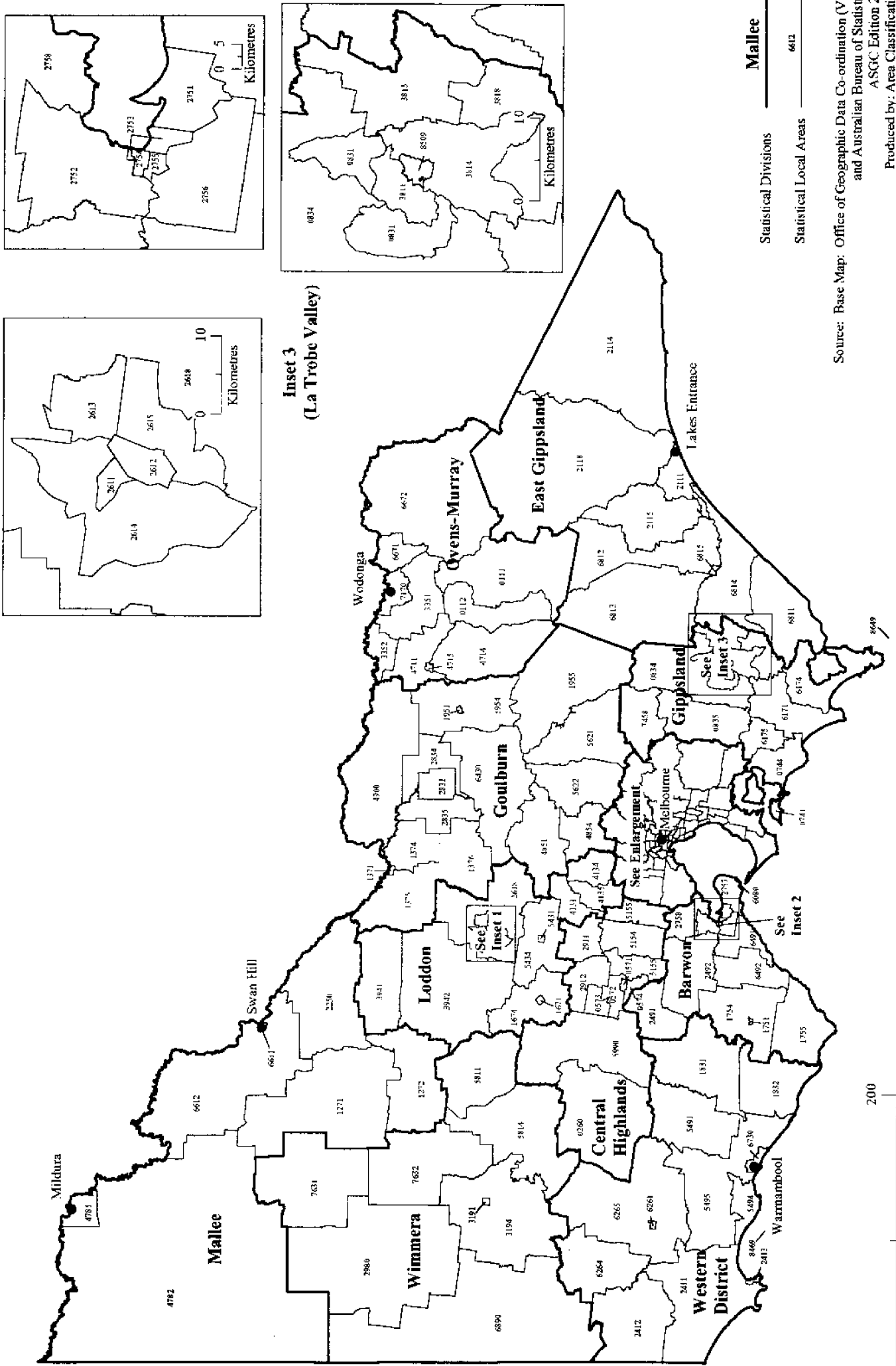
0741	Bass Coast (S) — Phillip Is.
0744	Bass Coast (S) Balance
0831	Baw Baw (S) — Part A
0834	Baw Baw (S) — Part B East
0835	Baw Baw (S) — Part B West
3811	La Trobe (S) — Moe
3814	La Trobe (S) — Morwell
3815	La Trobe (S) — Traralgon
3818	La Trobe (S) Balance
6171	South Gippsland (S) — Central
6174	South Gippsland (S) — East
6175	South Gippsland (S) — West
7458	Yarra Ranges (S) — Part B
8509	Yallourn Works Area
8529	French Island
8649	Bass Strait Islands

Off-Shore Areas and Migratory (SD)

9779	Off-Shore Areas & Migratory
------	-----------------------------

Victoria

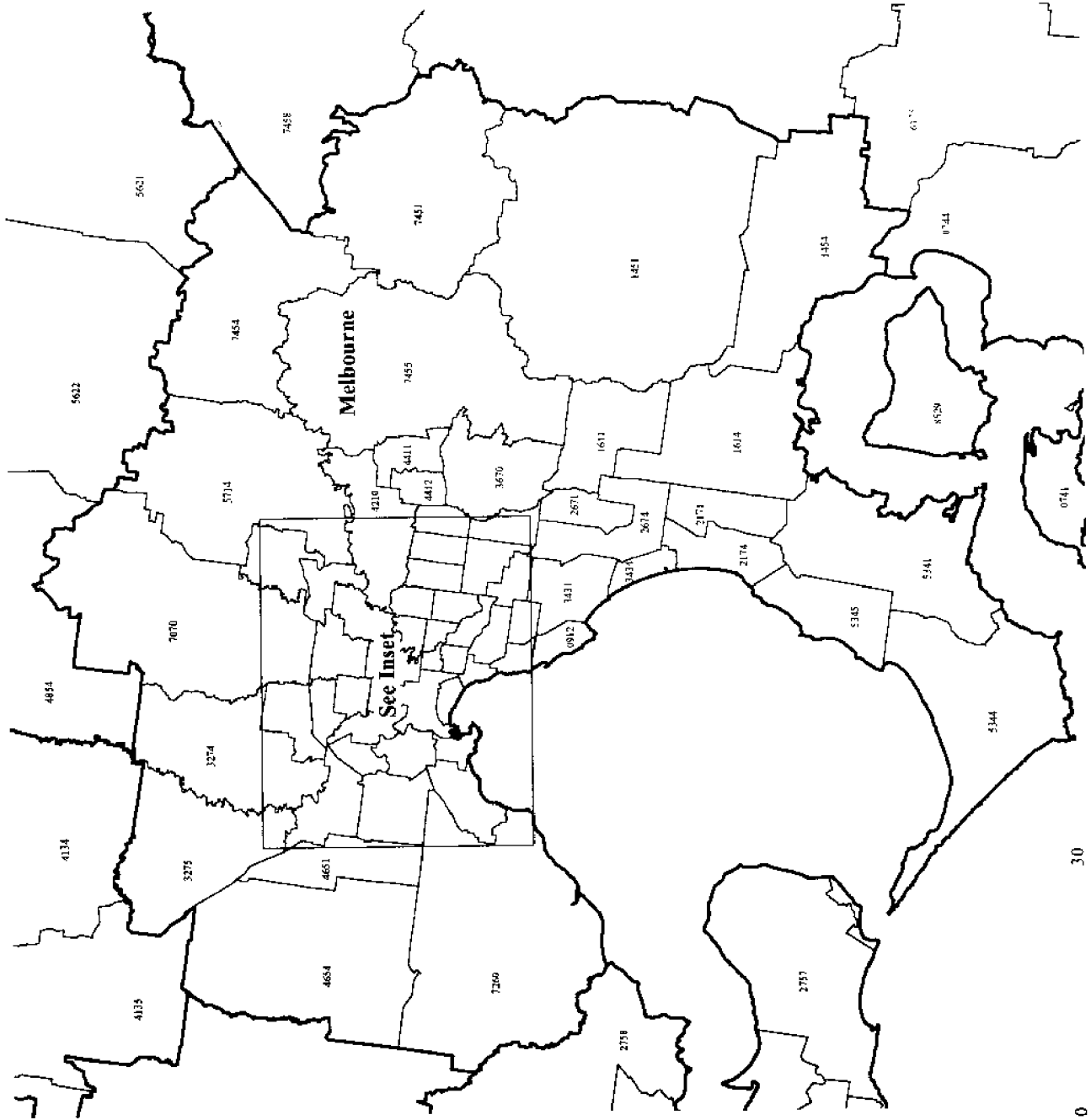
Statistical Divisions and Statistical Local Areas, 1 July 1995



Source: Base Map: Office of Geographic Data Co-ordination (Vic) and Australian Bureau of Statistics ASGC Edition 2.5
 Produced by: Area Classification © Commonwealth of Australia, 1995

Victoria - Enlargement

Statistical Divisions and Statistical Local Areas, 1 July 1995



Source: Base Map: Office of Geographic Data Co-ordination (Vic) and Australian Bureau of Statistics
ASGC Edition 2.5
Produced by: Area Classification
© Commonwealth of Australia, 1995

FOR MORE INFORMATION

The ABS publishes a wide range of information on Australia's economic and social conditions. A catalogue of publications and products is available from any of our offices (see below).

INFORMATION CONSULTANCY SERVICES

Information tailored to special needs of clients can be obtained from the Information Consultancy Service available at ABS Offices (see below).

ABS PRODUCTS

A large number of ABS products is available from the ABS Bookshops (see below). The ABS also provides a subscription service – you can telephone the ABS Subscription Service Australia wide toll free on 1800 0206 08.

ELECTRONIC SERVICES

A large range of data is available via on-line services, diskette, magnetic tape, tape cartridge and CD ROM. For more details about our electronic data services, contact any ABS office (see below) or email us at:

X.400 (C:Australia,PUB:Telememo,O:ABS,FN:STAT,SN:INFO)
Internet Stat.info@abs.telememo.au
Keylink STAT.INFO/ABS

You can visit us on the Internet at: <http://www.statistics.gov.au>

GENERAL SALES AND INQUIRIES

■ Sydney 02 268 4611 ■ Adelaide 08 237 7100
■ Melbourne 03 9615 7755 ■ Hobart 002 20 5800
■ Brisbane 07 3222 6351 ■ Darwin 089 43 2111
■ Perth 09 360 5140 ■ Canberra 06 252 6627

■ Information Services, ABS
PO Box 10, Belconnen ACT 2616



2863520003962

ISSN 1031-2900

RRP \$15.50

© Commonwealth of Australia 1996